

600496

2011

.....2

.....2

.....4

.....5

.....11

.....17

.....22

.....22

.....43

.....**Gd?U...ND**...44

( )

( )

9

8


( )

( )


( )

( )

( )

	CHANGJIANG & JINGGONG STEEL BUILDING (GROUP) CO., LTD
	CJJG

( )

	159	

	16	
	021-51876399-2222	0564-3631386
	021-54452496	0564-3631386
	600496@jgsteel.cn	600496@jgsteel.cn

( )

	237161
	237161
	www.600496.com
	600496@jgsteel.cn

( )

	www.sse.com.cn

( )

A			600496	G

( )

	1999 6 28
	2012 1 9
	340000000022295
	342401711774045
	71177404-5
	61 4

( )

	312,136,506.55
	321,626,062.93
	279,794,147.47
	268,917,011.91
	110,906,336.93

( )

	2011	2010	2009
	1,545,537.59	12,251,556.42	15,877,414.42
	6,592,902.76	6,941,949.54	6,313,983.02
			-3,335,555.35
		-131,742.07	-290,767.73
	148,571.28		
	4,042,413.3	-1,023,466.88	1,653,205.16
	-12,927.73	-41,522.87	92,369.80
	-1,439,361.64	-1,766,552.14	-2,971,806.96
	10,877,135.56	16,230,222.00	17,338,842.36

( )

	2011	2010		%	2009	
	5,706,273,972.86	5,313,048,737.74	5,313,048,737.74	7.40	4,509,837,470.39	4,509,837,470.39
	312,136,506.55	243,177,006.63	243,177,006.63	28.36	250,177,671.86	250,177,671.86
	321,626,062.93	248,447,888.44	248,447,888.44	29.45	255,018,340.03	255,018,340.03

	279,794,147.47	223,139,006.66	223,139,006.66	25.39	192,200,582.02	192,200,582.02
	268,917,011.91	206,908,784.66	206,908,784.66	29.97	174,861,739.66	174,861,739.66
	110,906,336.93	114,220,162.42	114,220,162.42	-2.90	191,633,529.02	191,633,529.02
	2011	2010		2011	2009	
					(%)	
	5,533,267,363.12	4,248,605,340.15	4,248,605,340.15	30.24	4,220,057,213.27	4,220,057,213.27
	3,597,073,239.74	2,630,935,920.47	2,630,935,920.47	36.72	2,836,631,165.41	2,836,631,165.41
	1,931,469,626.19	1,605,326,050.67	1,605,326,050.67	20.32	1,367,129,053.37	1,367,129,053.37
	586,566,000.00	387,000,000.00	387,000,000.00	51.57	387,000,000.00	387,000,000.00

	2011	2010		%	2009	
	0.48	0.38	0.58	26.32	0.35	0.55
	0.48	0.38	0.58	26.32	0.35	0.55
/						
	0.46	0.36	0.53	27.78	0.32	0.50
%	16.03	15.13	15.13	0.9	19.86	19.86
%	15.41	14.03	14.03	1.38	18.07	18.07
	0.19	0.30	0.30	-36.67	0.50	0.50
	2011	2010		%	2009	
	3.29	4.15	4.15	-20.72	3.53	3.53
%	65.01	61.92	61.92	3.09	67.22	67.22

( )

1

		(%)							(%)
1									
2									
3									
	38,700	100			19,350	606.6	19,956.60	58,656.60	100
1	38,700	100			19,350	606.6	19,956.60	58,656.60	100
2									
3									
4									
	38,700	100						58,656.60	100

2011 3 30                    2010                    2010  
                                         38700                    10  
 0.5                            5                            58050                    19350  
 2011 12 12                    2011  
                                         606.6  
                                         606.6                    58656.6  
  
 2011 4 13  
                                         2010                    19350  
  
 2011 12 21  
                                         606.6

	387,000,000.00	586,566,000.00	51.57%
	279,794,147.47	279,794,147.47	0.00%
	1,890,645,446.19	1,931,469,626.19	2.16%
	0.72	0.48	-33.33%
	0.69	0.46	-33.33%
	0.29	0.19	-34.48%
	4.89	3.29	-32.72%

2

( )

1

:

A	2009 11 9	8.39	4,200	2010 11 10	4,200	

2009 1079

2009 11 9

7

4200

12

2010

11 10

2

1 2011 3 30

2010

2010

38700

10

0.5

5

58050

19350

2 2011 12 12

2011

606.6

606.6

58656.6



3

( )

1

2011			50,791			50,926
		(%)				
		33.40	195,940,729	0	0	156,625,000
		3.39	19,900,978	0	0	
		2.24	13,164,361	5,103,643	0	
		1.98	11,607,490	11,607,490	0	
		1.71	10,019,618	10,019,618	0	
		1.70	9,988,517	-511,483	0	
	018L FH002	1.47	8,599,736	8,599,736	0	
		1.36	8,000,000	8,000,000	0	
		1.20	7,009,789	3,994,920	0	
		1.03	6,069,244	6,069,244	0	

008C CT001						
		195,940,729			195,940,729	
		19,900,978			19,900,978	
		13,164,361			13,164,361	
		11,607,490			11,607,490	
		10,019,618			10,019,618	
		9,988,517			9,988,517	
018L FH002		8,599,736			8,599,736	
		8,000,000			8,000,000	
		7,009,789			7,009,789	
008C CT001		6,069,244			6,069,244	

2

(1)

195,940,729

156,625,000

2011 9 5

(2)

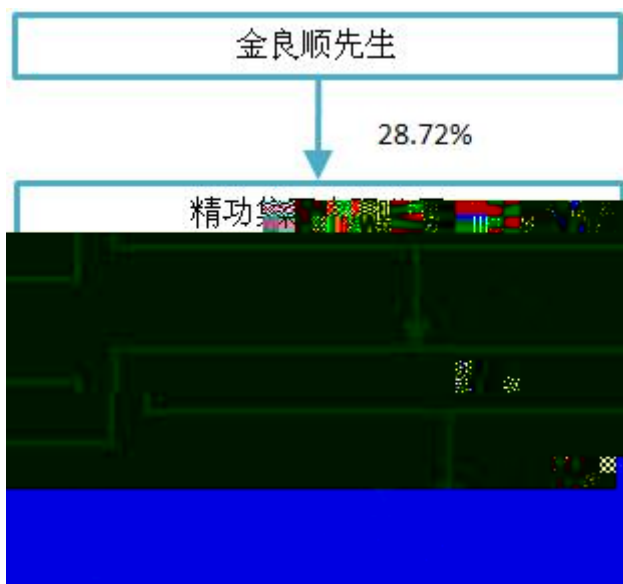
	2003 2 12
	32,000

(3)

	1996 1 23
	28,500

5	

(4)



3

( )

			45	2009 7 30	2012 7 31	0	240,000			57
			55	2009 7 30	2012 7 31	0	90,000			21
			47	2009 7 30	2012 7 31	0	240,000			57
			43	2009 7 30	2012 7 31	0	0			0
			43	2009 7 30	2012 7 31	0	120,000			53
			50	2009 7 30	2012 7 31	0	0			0
			42	2009 7 30	2012 7 31	0	0			5
			47	2009 7 30	2012 7 31	0	0			5
			51	2009 7 30	2012 7 31	0	0			5
			38	2011 3 30	2012 7 31	0	0			0
			36	2009 7 30	2012 7 31	0	0			32
			45	2009 7 30	2012 7 31	0	0			26
			46	2009 7 30	2012 7 31	0	120,000			53

			49	2009 7 30	2012 7 31	0	210,000		71	
			50	2009 7 30	2012 7 31	0	120,000		49	
			46	2010 3 8	2012 7 31	0	120,000		48	
			36	2009 7 30	2012 7 31	0	90,000		32	
			35	2011 3 10	2012 7 31	0	48,000		17	
	/	/	/	/	/	0	1,398,000	/	531	/

EMBA

EMBA



1997

2003

2003

2005

2002

2001

( )

			2009 6 30	2012 6 29	
			2009 1 1	2012 12 31	
			2009 6 30	2012 6 29	
			2009 6 30	2012 6 29	
			2009 1 1	2012 12 31	
			2010 5 20	2012 6 29	
			2009 6 30	2012 6 29	
			2009 6 30	2012 6 29	




( )

	1				2010
		2011			
	2	2006			
		2007	3		5
				2011	2011
		2011			

( )


( )

	5,370
	4
	3,055
	236
	511
	81
	313
	437

---

	737
	3,718
	1,580
	72

( )

1

2

3

9

3

4

4

3

1

5

"

"

6

7

" "

( )

1



( )


( )

	2010												
	<table border="0"> <tr> <td>28</td> <td>20</td> <td>25</td> <td></td> </tr> <tr> <td>8</td> <td>7</td> <td>3</td> <td>7</td> </tr> <tr> <td>19</td> <td></td> <td></td> <td></td> </tr> </table>	28	20	25		8	7	3	7	19			
28	20	25											
8	7	3	7										
19													

	" "

( )

606.6

15

101

180

( )

1

2

3

( )

1

2

3

( )

2010	2011 3 30		2011 3 31

( )

2011	2011 3 3		2011 3 4
2011 *	2011 4 6		2011 4 7
2011	2011 6 10		2011 6 11
2011	2011 10 10		2011 10 11

\* 2011

( )

3-5

23.26%                      57.06                      79.50  
7.40%

2.80		25.56%		45
15.38%				
1				
79.50		23.26%		22
	41	51.57%		16
6.5			4	
3			-1 2#	2.62
2.5				2.06
		1.84		
	1.77	D	1.75	1.72
3%	9%			
		41%	6	
				32%
9				
	27%	3		
		86%		
2				



2011

5

4

QC

5

QC

2011

9500

47

8

1

3

2

4

2011

2011

4

45

2010

15.38%

88%

100%

TWI3.1

TWI 3.1

5

8.5

5

100%

15.36%

2012

6

## BPM OA CRM MES SAP

( )

1

55.33

19.31

57.06

2.80

2

			(%)	(%)	(%)	%
	5,644,336,192.98	4,856,087,533.86	13.97%	19.27%	16.64%	1.94%
	34,737,363.62	28,254,195.22	18.66%	-93.73%	-94.52%	11.68%
	2,648,262,060.15	2,299,871,142.02	13.16%	25.75%	23.52%	1.57%
	1,364,906,258.08	1,171,927,571.46	14.14%	10.28%	8.99%	1.01%
	1,233,194,841.36	1,061,023,805.51	13.96%	-11.21%	-13.47%	2.25%
	397,973,033.39	323,265,014.87	18.77%			

2011

	34,737,363.62	28,254,195.22	18.66%	-93.73%	-94.52%	11.68%
--	---------------	---------------	--------	---------	---------	--------

3

	311,408,409.83		-1.22%
	1,038,542,007.60		38.50%
	2,303,433,304.42		4.78%
	1,020,939,804.81		61.16%
	334,339,041.63		33.10%
	166,988,545.09		-59.53%
	464,054,515.91		2.85%
	39,367,927.31		-85.67%

4

10%

	2,648,262,060.15	2,299,871,142.02	13.16%
	1,364,906,258.08	1,171,927,571.46	14.14%
	1,233,194,841.36	1,061,023,805.51	13.96%

5

2010

100%

2010

55%

55%

45%

45%

2011

Success Charm Int'l Holding Limited ( )

100%

2011



---

	210,763,663.35	8,375,929.08	2416.3	
	586,566,000.00	387,000,000.00	51.57	
	87,746,083.75	66,558,949.15	31.83	
	4,724,497.19	12,343,369.01	-61.72	

		22,751,061.34	-100	
	333,226,221.02	186,737,220.78	78.45	
	98,983,554.72			
	1,470,000.00	3,094,098.42	-52.49	
	773,963.71	12,822,136.15	-93.96	
		53,877,304.49	-100	
	117,407,085.44	86,479,539.20	35.76	
	48,091,036.00			
	512,363,701.56			
	40,824,180.00			
	1,216,699,000.00	842,017,934.02	44.5	
		13,126,646.00	-100	
	76,371,841.85	42,897,356.61	78.03	
	34,500,000.00			
	809,264.26	-622,984.25	-229.9	

12

79.50

13

(1)

			5000	2,950,138,273.30	738,792,794.92	160,346,722.22
			900	541,818,889.001	113,030,927.85	64,946,175.36
			550	169,633,744.93	57,549,839.19	2,474,100.44
			5000	167,001,538.34	14,747,906.57	-11,624,656.89
			8000	220,309,761.21	70,117,309.34	-3,406,452.16
			500	143,318,619.64	49,555,854.44	-3312403.49



(2)

10%

	2,965,558,817.14	178,963,730.32	160,346,722.22
	1,571,533,990.57	155,954,221.01	137,709,520.84
	949,267,023.95	68,818,611.57	64,946,175.36

( )

1

2011

2

3-5

2012

100

(3)

70%

(4)

(5)

(6)

5

(1)

( )

:

	70,302.84
	64,902.84
	5,400
(%)	1,201.9

		(%)	
ASIA BUILDINGS COMPANY LIMITED		99.76	
		99.80	15.36% ASIA BUILDINGS COMPANY LIMITED 84.44%
		100	
		99.68	100%
		99.68	100%
		99.76	

			100%
		100	

1

(1)

(2)

2

3

ASIA BUILDINGS COMPANY LIMITED 100%	7000		3774.85
15.36%	8,175		614.23
20%	1,134.1		
	800		-1.23
	400		-0.64
	100		-0.87
	9,000	1798	
	29,500	7334.25	-331.24
	12,600	1594.57	
69.34%	3,675		-229.68

1 2011 ASIA BUILDINGS COMPANGY  
LIMITED Success Charm Int'l  
Holding Limited ( ) 100.00% 7000

2 2011 15.36%  
8175 15.36%

3 2011

20%

4 2011 5 6

800

5 2011 10 24

400

6 2011 11 8

100

7

2011

8 2011

9 2010

3700

7 15 2011 7 21

69.34%

( )

( )

1

2011	2011 2 14			2011 2 16
	2011 3 8			2011 3 10
2011	2011 3 17			2011 3 18
2011	2011 3 21			2011 3 22
2011	2011 4 26			2011 4 27
2011	2011 5 25			2011 5 26
2011	2011 6 7			2011 6 8

2011	2011 7 7		2011 7 8
2011	2011 7 25		2011 7 26
2011	2011 8 19		2011 8 20
2011	2011 9 22		2011 9 23
2011	2011 10 23		2011 10 25
2011	2011 10 27		2011 10 28
2011	2011 11 7		2011 11 8
2011	2011 12 5		2011 12 7
2011	2011 12 12		2011 12 13

2

2011 3 30

2010

2010

387,000,000

10

0.5

2010

10 5

19,350

2011 4 7

2010

2010

2011 4 6

2011

2011

2011

7 27

[2011]1183

2011 10 10

2011

2012 1 9

[2012]10

7

3

3

2 1

1

2011

2011

2011

6

2

2011

2011

2012 2 6

2011

2011

2012 3 12



2011

3 25 2011 2011 2012

2011 2011

4 2012 4

2 1

2011 5

5 180

2010 3

6

7 2012

1

2

2012

3

4

OA

8

9

( )

" " "

30%

"

2011	3	30	2010		2010
	2010			10	0.5
		19,350,000.00			

( )

2011

	211,871,345.96		
21,187,134.60		176,561,574.52	2010
19,350,000.00		347,895,785.88	2011
2011		10	0.7
	41,059,620.00		

2011

( )

	10	10 ( )	10			(%)
2008		0.7		24,150,000.00	125,343,902.89	19.27
2009		0.3		11,610,000.00	192,200,582.02	6.04
2010		0.5	5	19,350,000.00	223,139,006.66	8.67

( )

( )

	6	
	2011 3 8	2010
159	15	2010
3	3	2010
26	2011 4	2011
3	3	
	2011 7 8	
3	3	
19	2011 8	2011
3	3	
27	2011 10	2011
3	3	
	2011 12	

12

3

3

( )

( )

( )

1

: :

										(%)	
	100%	2011 3 3	7000	3,774.85						13.49	
	15.36%	2011 3 30	8,175	614.23						2.20	
	20%	2011 12 5	1,134.1								
		2011 7 21	3,675	-229.68						-1.18	

1 2011 2 14  
3 3 2011

2011

ASIA BUILDINGS COMPANGY LIMITED

2011

Success Charm Int'l Holding Limited ( )

100.00%

7000

2011 6

2011 6 30

6 30

2

2010

3700

7 15

2011 7 21

2

: :

											(%)
	45%	2011 5 30	5,870.68	179.9	77.17						0.4
	45%	2011 5 30	4,042.82	-278.12	191.96						1.1

1 2010

100%

2

55%

2011 5

2010 11

55%

45%

2011 6 30

3



( )

					1,800,000					
					6,066,000					
					-1,290,000					
					10,944,000					
					6,066,000					
					2011	7	8	2011		
							1100	1650	10.15	/
						6.73	/			
					2011	7	8	2011		
							15	180	12.82	/
								240,000		360,000
								240,000		360,000
								90,000		135,000
								120,000		180,000
								120,000		180,000
								210,000		315,000
								120,000		180,000
								120,000		180,000
								90,000		135,000
								48,000		72,000
					2011	12	12	2011		
					606.6					
					606.6			58,656.6		
								22		
					1					
					1		X=10.15		2010	
								6.73		
					2		r		2010	
								4		3
						1			2.6%	
						2			3.1%	
						3			3.73%	
					3			2010	7	26
									14.68%	30
					2					
					1		x=12.82			
					2		r		2011	
								3.4		2
						1.4			5.09%	
						2.4			8.72%	

	3	2011 7 8	30
		3.08%	
	2011		2806.43

( )

1

( )

1

10

10

(1)

(2)

(3)

2

: :

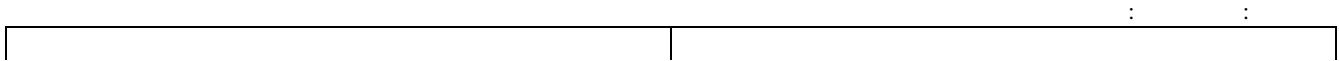
		0
A		0
		52,454.05
B		53,504.05
		53,504.05
A+B		53,504.05
		0
C		0
D	70	49,504.05
50 E		0
C+D+E		49,504.05

3

( )

1


( )



2011		2011 4 13	www.sse.com.cn
		2011 4 15	www.sse.com.cn
2011 2011	2011	2011 4 27	www.sse.com.cn
2011 2011		2011 5 26	www.sse.com.cn
		2011 5 27	www.sse.com.cn
2011		2011 6 8	www.sse.com.cn
2011		2011 6 11	www.sse.com.cn
A		2011 7 1	www.sse.com.cn
2011 2011		2011 7 9	www.sse.com.cn
	2011	2011 7 21	www.sse.com.cn
2011		2011 7 26	www.sse.com.cn
A		2011 7 29	www.sse.com.cn
2011 2011		2011 8 20	www.sse.com.cn
2011 2011		2011 9 23	www.sse.com.cn
2011		2011 10 11	www.sse.com.cn
2011		2011 10 20	www.sse.com.cn

2011		2011 10 25	www.sse.com.cn
2011		2011 10 28	www.sse.com.cn
2011		2011 11 8	www.sse.com.cn
2011		2011 11 23	www.sse.com.cn
2011		2011 12 7	www.sse.com.cn
20%			
2011		2011 12 13	www.sse.com.cn
2011		2011 12 23	www.sse.com.cn
		2011 12 28	www.sse.com.cn

**2011**

2011 1 1 2011 12 31

---

1-2

1-4

5-6

7-8

9-12

1-110

[2012] 111131

2011                      2011   12   31                      2011  
2011                      2011

1  
2



2011 12 31

2011

**O**

2011 12 31

		113,006,937.01	80,648,700.72
		15,674,397.70	140,132.17
		110,763,988.09	106,632,498.48
		10,058,763.15	8,861,140.73
		97,372,757.06	
		367,325,667.41	123,347,980.51
		277,010,733.16	228,132,775.56
		991,213,243.58	547,763,228.17

8,861,140.73de8Hw6&p&3QeDFH@DH&"EdD"HnyGdI467ldD"HfID"HOE

2011 12 31

		265,000,000.00	215,000,000.00
		258,671,255.00	111,352,059.20
		190,698,119.63	157,438,505.20
		6,439,637.55	35,167,250.65
		4,817,402.35	4,440,911.11
		7,848,894.96	6,680,423.46
		1,972,334.00	302,659.06
		74,001,109.00	16,214,826.15
		809,448,752.49	546,596,634.83
		1,963,635.00	1,963,635.00
		1,963,635.00	1,963,635.00
		811,412,387.49	548,560,269.83
		586,566,000.00	387,000,000.00
		424,999,617.56	556,329,951.86
		64,176,727.37	42,989,592.77
		347,895,785.88	176,561,574.52
		1,423,638,130.81	1,162,881,119.15
		2,235,050,518.30	1,711,441,388.98

2011 12 31

	( )	461,922,391.69	514,075,267.85
	( )	85,941,064.73	39,165,039.07
	( )	990,510,675.57	760,544,809.38
	( )	77,003,598.86	106,395,668.16
	( )	162,885,421.96	133,586,523.55
	( )	2,323,542,504.18	1,699,846,889.70
		4,101,805,656.99	3,253,614,197.71
	( )	20,337,378.59	118,826,896.36
	( )	27,975,228.89	50,551,164.44
	)	683,945,245.55	579,971,301.10
	)	113,547,655.32	68,513,013.32
		205,828,674.11	141,490,083.80
		339,344,489.79	3,768,786.56
	( )	350,144.20	948,671.48
	( )	40,132,889.68	30,921,225.38
		1,431,461,706.13	994,991,142.44

5,533,267.9w .475(1 T0 Tr4.0133 0 TD0 Tc( )Tj/TT4 1 T18.7 0 TD

2011 12 31

	( )	633,000,000.00	467,877,235.18
	( )	413,171,629.89	348,621,044.48
	( )	1,549,162,113.91	1,040,029,636.80
	( )	473,102,673.99	545,811,206.79
	( )	45,969,048.43	36,849,244.46
	( )	122,164,171.70	102,584,326.14
	( )	2,963,989.16	672,742.21
	( )	265,552.21	
	( )	64,858,877.10	80,114,555.33
	( )	80,651,520.00	
		3,385,309,576.39	2,622,559,991.39
	( )	210,763,663.35	8,375,929.08
	( )	1,000,000.00	
		211,763,663.35	8,375,929.08
		3,597,073,239.74	2,630,935,920.47
	( )	586,566,000.00	387,000,000.00
	( )	423,748,945.79	558,035,770.09
	( )		
	( )	87,746,083.75	66,558,949.15
	( )	836,540,774.95	597,283,762.08
		-3,132,178.30	-3,552,430.65
		1,931,469,626.19	1,605,326,050.67
		4,724,497.19	12,343,369.01
		1,936,194,123.38	1,617,669,419.68
		5,533,267,363.12	4,248,605,340.15

2011

		754,584,559.45	508,163,627.24
		674,460,367.05	467,564,482.94
		6,913,414.23	3,952,343.65
		5,610,296.22	5,852,137.93
		60,276,118.71	29,896,734.05
		25,768,920.06	8,008,892.28
		831,339.53	5,031,687.37
	“ ”		
	“ ”	229,464,320.23	95,028,700.83
	“ ”	210,188,423.88	82,886,049.85
		2,080,207.03	1,976,933.40
		521,985.89	622,326.01
		312,697.23	231,996.12
	“ ”	211,746,645.02	84,240,657.24
		-124,700.94	-1,887,259.00
	“ ”	211,871,345.96	86,127,916.24
		0.36	0.15
		0.36	0.15
		211,871,345.96	86,127,916.24

2011

		5,706,273,972.86	5,313,048,737.74
	( )	5,706,273,972.86	5,313,048,737.74
		5,397,375,039.06	5,085,416,958.87
	( )	4,888,546,217.17	4,681,362,518.82
	( )	80,414,619.50	56,224,756.16
	( )	81,995,753.01	87,088,893.49
	( )	255,779,695.51	188,776,284.10
	( )	55,642,954.48	35,827,635.61
	( )	34,995,799.39	36,136,870.69
	“_”		
	“_”	( )	3,237,572.75
	“_”		
	“_”		
		312,136,506.55	243,177,006.63
	( )	12,762,132.97	11,075,996.93
	( )	3,272,576.59	5,805,115.12
		1,298,817.10	1,482,668.44
	“_”		
		321,626,062.93	248,447,888.44
	( )	41,453,495.87	29,082,329.95
	“_”		
		280,172,567.06	219,365,558.49
			-131,742.07
		279,794,147.47	223,139,006.66
		378,419.59	-3,773,448.17
	( )	0.48	0.38
	( )	0.48	0.38
	( )	420,252.35	-551,852.52
		280,592,819.41	218,813,705.97
		280,213,387.85	222,587,154.14
		379,431.56	-3,773,448.17

2011

	630,225,572.86	447,553,918.30
	87,689,635.82	10,252,189.95
	717,915,208.68	457,806,108.25
	548,030,870.03	353,993,258.92
	37,756,324.50	35,281,243.40
	18,514,210.51	12,423,523.89
	280,811,358.66	207,944,730.21
	885,112,763.70	609,642,756.42
	-167,197,555.02	-151,836,648.17
	66,520,100.00	
	120,042,111.53	92,061,677.18
	225,881.35	206,381.54
		121,165,000.00
	186,788,092.88	213,433,058.72
	5,887,232.63	4,238,110.07
	141,091,036.00	54,000,000.00
	146,978,268.63	58,238,110.07
	39,809,824.25	155,194,948.65
	40,824,180.00	
	403,000,000.00	215,000,000.00
	443,824,180.00	215,000,000.00
	238,000,000.00	140,327,273.00
	43,811,951.92	20,088,377.77
	34,500,000.00	
	316,311,951.92	160,415,650.77
	127,512,228.08	54,584,349.23
	124,497.31	57,942,649.71
	74,669,672.78	16,727,023.07
	74,794,170.09	74,669,672.78



2011

		4,156,534,703.87	4,948,639,654.09
			22,751,061.34
	( )	114,467,084.57	122,392,343.28
		4,271,001,788.44	5,093,783,058.71
		3,323,511,031.91	4,370,090,593.76
		302,308,864.59	264,082,640.44
		201,049,333.99	158,652,441.31
	( )	333,226,221.02	186,737,220.78
		4,160,095,451.51	4,979,562,896.29
		110,906,336.93	114,220,162.42
		98,983,554.72	
		1,470,000.00	3,094,098.42
		773,963.71	12,822,136.15
			53,877,304.49
		101,227,518.43	69,793,539.06
		117,407,085.44	86,479,539.20
		48,091,036.00	
		512,363,701.56	
		677,861,823.00	86,479,539.20
		-576,634,304.57	-16,686,000.14
		40,824,180.00	
		1,216,699,000.00	842,017,934.02
			13,126,646.00
		1,257,523,180.00	855,144,580.02
		680,378,480.91	932,432,628.87
		76,371,841.85	42,897,356.61
			594,177.31
	( )	34,500,000.00	
		791,250,322.76	975,329,985.48
		466,272,857.24	-120,185,405.46
		809,264.26	-622,984.25
		1,354,153.86	-23,274,227.43
		374,083,237.97	397,357,465.40
		375,437,391.83	374,083,237.97

2011

	( )							
	387,000,000.00	556,329,951.86			42,989,592.77		176,561,574.52	1,162,881,119.15
	387,000,000.00	556,329,951.86			42,989,592.77		176,561,574.52	1,162,881,119.15
“ ”	199,566,000.00	-131,330,334.30			21,187,134.60		171,334,211.36	260,757,011.66
							211,871,345.96	211,871,345.96
							211,871,345.96	211,871,345.96
	6,066,000.00	62,169,665.70						68,235,665.70
1	6,066,000.00	34,758,180.00						40,824,180.00
2		28,064,292.50						28,064,292.50
3		-652,806.80						-652,806.80
					21,187,134.60		-40,537,134.60	-19,350,000.00
1					21,187,134.60		-21,187,134.60	
2								
3							-19,350,000.00	-19,350,000.00
4								
	193,500,000.00	-193,500,000.00						
1	193,500,000.00	-193,500,000.00						
2								
3								
4								
1					2,179,898.76			2,179,898.76
2					-2,179,898.76			-2,179,898.76
	586,566,000.00	424,999,617.56			64,176,727.37		347,895,785.88	1,423,638,130.81

2011

	( )							
	387,000,000.00	532,255,124.48			32,943,071.38		110,656,449.90	1,062,854,645.76
	387,000,000.00	532,255,124.48			32,943,071.38		110,656,449.90	1,062,854,645.76
“.”		24,074,827.38			10,046,521.39		65,905,124.62	100,026,473.39
							86,127,916.24	86,127,916.24
							86,127,916.24	86,127,916.24
		24,074,827.38			1,433,729.77			25,508,557.15
1								
2		2,566,700.00						2,566,700.00
3		21,508,127.38			1,433,729.77			22,941,857.15
					8,612,791.62		-20,222,791.62	-11,610,000.00
1					8,612,791.62		-8,612,791.62	
2								
3							-11,610,000.00	-11,610,000.00
4								
1								
2								
3								
4								
1				1,247,883.79				1,247,883.79
2				-1,247,883.79				-1,247,883.79
	387,000,000.00	556,329,951.86			42,989,592.77		176,561,574.52	1,162,881,119.15

2011

	( )									
	387,000,000.00	558,035,770.09			66,558,949.15		597,283,762.08	-3,552,430.65	12,343,369.01	1,617,669,419.68
	387,000,000.00	558,035,770.09			66,558,949.15		597,283,762.08	-3,552,430.65	12,343,369.01	1,617,669,419.68
	199,566,000.00	-134,286,824.30			21,187,134.60		239,257,012.87	420,252.35	-7,618,871.82	318,524,703.70
							279,794,147.47		378,419.59	280,172,567.06
							279,794,147.47		378,419.59	280,172,567.06
	6,066,000.00	59,213,175.70						420,252.35	-7,997,291.41	57,702,136.64
1	6,066,000.00	34,758,180.00							-7,997,291.41	32,826,888.59
2		28,064,292.50								28,064,292.50
3		-3,609,296.80						420,252.35		-3,189,044.45
					21,187,134.60		-40,537,134.60			-19,350,000.00
1					21,187,134.60		-21,187,134.60			
2										
3							-19,350,000.00			-19,350,000.00
4										
	193,500,000.00	-193,500,000.00								
1	193,500,000.00	-193,500,000.00								
2										
3										
4										
1					23,420,513.07					23,420,513.07
2					-23,420,513.07					-23,420,513.07

2011

	( )									
	387,000,000.00	530,815,926.93			57,946,157.53		394,367,547.04	-3,000,578.13	16,296,994.49	1,383,426,047.86
	387,000,000.00	530,815,926.93			57,946,157.53		394,367,547.04	-3,000,578.13	16,296,994.49	1,383,426,047.86
“ ”		27,219,843.16			8,612,791.62		202,916,215.04	-551,852.52	-3,953,625.48	234,243,371.82
							223,139,006.66		-3,773,448.17	219,365,558.49
							223,139,006.66		-3,773,448.17	219,365,558.49
		27,219,843.16						-551,852.52		26,667,990.64
1										
2		2,566,700.00								2,566,700.00
3		24,653,143.16						-551,852.52		24,101,290.64
					8,612,791.62		-20,222,791.62		-180,177.31	-11,790,177.31
1					8,612,791.62		-8,612,791.62			
2										
3							-11,610,000.00		-180,177.31	-11,790,177.31
4										
1										
2										
3										
4										
1					15,381,802.13					15,381,802.13
2					-15,381,802.13					-15,381,802.13
	387,000,000.00	558,035,770.09			66,558,949.15		597,283,762.08	-3,552,430.65	12,343,369.01	1,617,669,419.68

# O

“ ” “ ”

1999 11

340000000022295

2002 2 7

[2002]22

2002 5

22

4,000

11,000

11,000.00

2004

(

“

”

6,288.1218

57.165%

4,000

36.364%

678.8832

6.172%

32.995 ,

0.299%

2005 11

920

2005

2005

12 31

11,000

10 5

5,500

16,500

2006

2006 68

6,500

23,000

2011

---

2008	5	20				2007
23,000				10	2	3
34,500						

2009						
[2009]1079						
					4,200	
			38,700			

2011	3	30				2010
38,700				10	5	58,050

2011	12	13		2011		
606.60					58,656.60	

2011	12	31			58,656.60	
58,656.60						

2011 12 31

“ ”

“ ”

“ ”

“ ”

“ ”

“ ”

“ ”

“ ”

“ ”

“ ”

“ ”

SINGAPORE JINGGONG STEEL STRUCTURE PTE .LTD.

“

”

“ ”

Purple Cayman,Limited

“ ”

“ ”

American Buildings Company Asia L.P.

“ ”

“ ”

“ ”

“ ”

“ ”

ASIA BUILDINGS COMPANY LIMITED

“ ”

“ ”

“ ”

“ ”

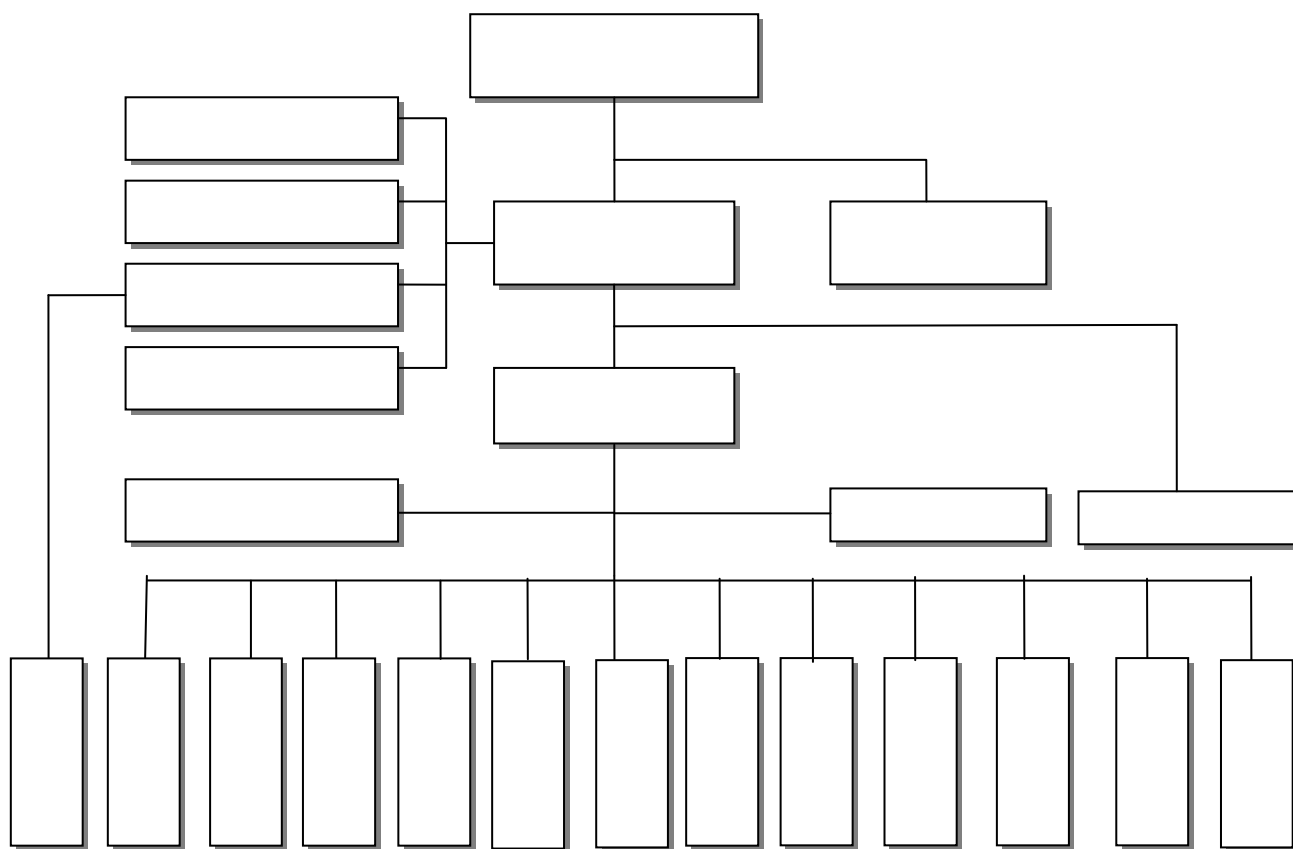
“ ”

“ ”

“ ”

“ ”





15

—

38

2006 2

(

“

”)

15

—

(2010 )

1 1 12 31





“ ”

1

2

3

4

5

1

2

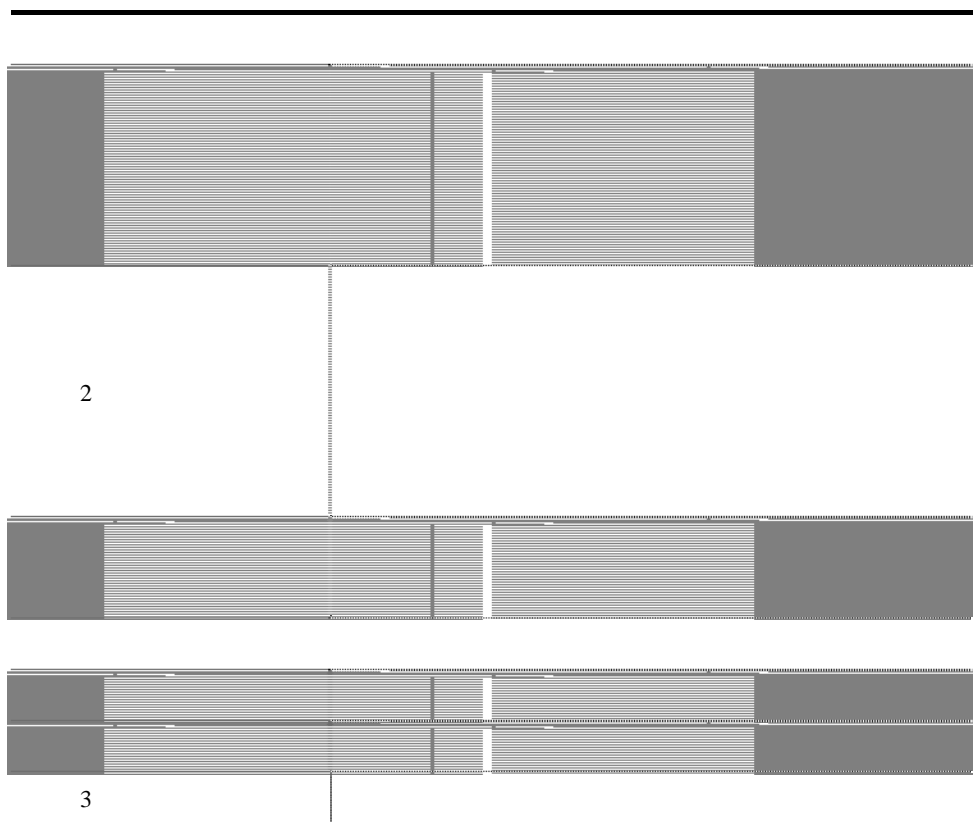
1

2

1

2

100 2,000



		(%)	(%)
1	1	5.00	5.00
1	2	10.00	10.00
2	3	30.00	30.00
3	4	50.00	50.00
4	5	80.00	80.00
5		100.00	100.00



:

:

1

2

1

1

2



1

2

		%	%
	20-30	3-10	4.85-3.00
	8-12	3-10	12.15-7.50
	3-10	3-10	32.33-9.00
	5-10	3-10	19.40-9.00

- 1
- 2
- 3
- 4

1

2

3

3

1



2

	50	
	5	

1

2

3

4

5

- 1
- 2
- 3

**2**

**1**

Black-Scholes

1

2

1

2

- 1
- 2
- 3
- 4
- 5
- 6
- 7
- 8
- 9

10

**1**

**2**

		%		
		17.00	1	
		3.00	5.00	2
		5.00		7.00
		12.50	15.00	25.00
		1.00	2.00	3.00

1

2011 23





- 1 [2008]172  
[2008]362  
GF201134000153  
2011-2013 15%
- 2 [2008]172  
[2008]362  
[2011]123  
[2011]263  
GF201133000663 2011-2013  
15%
- 3 2007 3  
26.40%  
“ ” 2008 25% 2011  
12.5%
- 4 2007 8  
“ ” 2011  
12.5%
- 5 [2008]172  
[2008]362  
GR200931000364  
2009-2011 2009 2011 15%
- 6 [2008]21  
12.5%  
2011 1 1 2012 12 31
- 7 2007  
2011  
12.5%

						(%)	(%)		
		900		900	99.94	1	99.94	1	27,021.82
		550		550	99.94	1	99.94	1	9,212.12
		9,500		9,500	99.76	2	99.76	2	1,441,444.67
		8,000		8,000	100.00		100.00		
		50		50	100.00		100.00		

								(%)	(%)				
				10				99.68	99.68				-4,559.50
								3	3				
				800		800		99.68	99.68				26,103.96
								3	3				
				400		400		99.68	99.68				13,051.15
								3	3				
				100		100		99.76	99.76				
								2	2				

1	2011	12	31		75.00%		26.32%
				99.68%	73.68%		99.76%
				25.00%			99.94%
2	2011	12	31		26.32%		99.68%
73.68%				99.76%			100%
				99.76%			

3	2011	12	31			99.68%		100.00%
						99.68%		
4			1%					

							(%)	(%)				
			5,000			5,000	99.68	99.68		2,401,805.57		
							1	1				
			1,500			1,500	100.00	100.00				
			5,000			5,000	100.00	100.00				
			2,910			2,910	100.00	100.00				
			5,300			5,300	100.00	100.00				
							2					

2011

1	2011	12	31		95.68			4				
99.68												
2		100%		2011	7	15			3,675.00			
		5,300.00					69.34%	2011	7	21		69.34%
		3,675.00			2011	12	31		100%			

							(%)	(%)				
			500			500	99.94	99.94				-20,667.71
							2	2				
						1	99.76	99.76				-64,189.25
							3	3				
			5,000			5,000	100.00	100.00				
							1					

							(%)	(%)				
		Cayman. Island.B.W.I	1,050		1,050		99.76 3	99.76 3				-54,007.42
		Cayman. Island.B.W.I	1,500		1,500		99.76 3	99.76 3				61,856.35
			1,100		1,100		99.76 3	99.76 3				216,847.94
			1		1		99.76 3	99.76 3				199,908.69
			3,990		3,990		99.76 3	99.76 3				102,895.39
			2		2		99.76 3	99.76 3				1,464.81

							(%)	(%)				
			500		500		99.80 4	99.80 4		395,389.85		
			500		500		99.76 3	99.76 3		-16,691.39		
			2,500		2500		99.80 4	99.80 4		-4,254.01		
			228		228		99.79 4	99.79 4		-8,135.85		

2011

---

1				80%		20%	2011	12	31
	100%								
2	2011	12	31		75.00%				99.76%
25.00%					99.94%				
3	2011	12	31		99.76%				
					100%				
					99.76%				
4	2011	12	31		15.36%				84.64%
100%				75%		99.80%			99.79%



1  
 2  
 3

100%

100%

100%

84.64%

75%

15.36%

25%

	7,987,747.00	-12,253.00
	3,993,620.00	-6,380.00
	991,237.00	-8,763.00
	608,310.61	17,815.39
	230,319,488.16	41,551,514.64
	15,492,767.94	-46,540.42
	33,753,061.71	3,895,919.77
	23,233,384.11	-1,527,924.58

2011 3 17 15.36% 81,750,000.00  
 2011 3 30  
 2011 6 20 7,000.00  
 100%  
 453,572,000.00

84.64% 25% 100%  
 100% 75%

		53,532.20
33,557.57		
		19,974.63
	33,557.57	

	42,356.39	42,356.39	40,983.92
	5,950.78	5,996.78	6,401.46
	896.55	2,028.32	375.50
	30,406.86	30,406.86	29,525.54
	18,796.86	19,974.63	18,235.34

2011

---

		1.78	-2.03
	39,981.12	4,155.15	2,574.06
		-4.65	-0.61
	5,123.41	389.59	2,985.91
	63.64	-152.79	-1,903.54

2011 12 31

2011

12 31

2011 12 31

2011 12 31



	76,441,064.73	35,519,172.17
	9,500,000.00	3,645,866.90
	85,941,064.73	39,165,039.07

	2011.12.8	2012.6.8	7,480,000.00
			7,480,000.00

2011 12 31 7,480,000.00 7,480,000.00

**2011 12 31**  
**360,335,278.66**

	2011.7.27	2012.1.27	10,000,000.00
	2011.9.29	2012.3.19	10,000,000.00
	2011.7.1	2012.1.1	10,000,000.00
	2011.8.29	2012.2.29	6,000,000.00
	2011.9.29	2012.3.29	5,000,000.00
			41,000,000.00

		%		%		%		%
1	795,410,935.82	66.49	39,770,546.80	5.00	508,515,425.96	53.93	25,425,771.28	5.00
1 2	156,677,180.85	13.10	15,765,981.89	10.06	167,640,954.80	17.78	20,158,690.44	12.02
2 3	86,690,702.26	7.25	28,035,702.16	32.34	115,177,856.76	12.22	34,553,357.04	30.00
3 4	47,948,004.51	4.01	26,118,605.53	54.47	99,989,807.19	10.61	53,341,068.61	53.35
4 5	69,453,474.31	5.80	55,978,785.80	80.60	13,498,260.17	1.43	10,798,608.14	80.00
5	40,076,358.17	3.35	40,076,358.17	100.00	38,037,473.03	4.03	38,037,473.02	100.00
	1,196,256,655.92	100.00	205,745,980.35		942,859,777.91	100.00	182,314,968.53	

		%		%		%		%
1	1,183,580,390.70	98.94	193,069,715.13	16.31	932,395,675.75	98.89	171,850,866.37	18.43
	1,183,580,390.70	98.94	193,069,715.13	16.31	932,395,675.75	98.89	171,850,866.37	18.43
	12,676,265.22	1.06	12,676,265.22	100.00	10,464,102.16	1.11	10,464,102.16	100.00
	1,196,256,655.92	100.00	205,745,980.35		942,859,777.91	100.00	182,314,968.53	

		%			%	
1	795,410,935.82	66.49	39,770,546.81	508,515,425.96	53.93	25,425,771.28
1 2	156,567,998.85	13.09	15,656,799.89	163,869,182.64	17.38	16,386,918.28
2 3	83,792,857.30	7.01	25,137,857.20	115,177,856.76	12.22	34,553,357.04
3 4	43,658,798.00	3.65	21,829,399.01	93,297,477.19	9.90	46,648,738.61
4 5	67,373,442.56	5.63	53,898,754.05	13,498,260.17	1.43	10,798,608.14
5	36,776,358.17	3.07	36,776,358.17	38,037,473.03	4.03	38,037,473.02
	1,183,580,390.70	98.94	193,069,715.13	932,395,675.75	98.89	171,850,866.37
<b>12,676,265.22</b>						

			5	2,612,404.83	2,612,404.83
			5	2,520,783.00	2,520,783.00
			5	1,270,985.00	1,270,985.00
			5	957,447.60	957,447.60
			5	885,395.80	885,395.80
			5	672,000.00	672,000.00
	361		5	262,085.41	262,085.41
			5	243,912.00	243,912.00
			5	236,000.00	236,000.00
			5	200,000.00	200,000.00
			5	61,540.16	61,540.16
			5	10,500.00	10,500.00
				9,933,053.80	9,933,053.80

				(%)
		33,352,097.84	1	2.79
		30,000,000.00	1	2.51
		22,864,384.45	1	1.91
		18,000,000.00	1	1.50
		17,560,189.34	3-5	1.47
		121,776,671.63		10.18

		(%)		(%)
1	71,713,412.87	93.13	97,957,544.14	92.07
1 2	2,311,732.92	3.00	3,280,518.66	3.08
2 3	1,339,835.31	1.74	2,039,833.04	1.92
3	1,638,617.76	2.13	3,117,772.32	2.93
	77,003,598.86	100.00	106,395,668.16	100.00



		12,249,884.62	1	
		6,021,607.02	1	
		6,000,000.00	1	
		3,117,575.53	1	
		2,651,624.19	1	
		30,040,691.36		

	51,614.00	4.8679	251,251.79	54,739.02	5.1191	280,214.52
	20,640.00	0.7886	16,276.70			
			267,528.49			280,214.52

		%	%		%		%	
1	112,520,096.76	57.33	5,626,442.99	5.00	90,050,442.92	56.99	4,492,517.16	4.99
1 2	37,797,845.32	19.26	3,779,784.54	10.00	33,875,639.23	21.44	3,387,563.92	10.00
2 3	21,443,771.67	10.93	6,433,131.50	30.00	20,115,552.36	12.73	6,034,665.72	30.00
3 4	11,974,585.87	6.10	5,987,292.95	50.00	5,988,423.86	3.79	2,994,211.94	50.00
4 5	4,878,871.56	2.49	3,903,097.24	80.00	2,327,119.59	1.47	1,861,695.67	80.00
5	7,645,154.27	3.89	7,645,154.27	100.00	5,657,778.69	3.58	5,657,778.69	100.00
	196,260,325.45	100.00	33,374,903.49		158,014,956.65	100.00	24,428,433.10	

		%		%		%		%
1	195,413,401.93	99.57	32,527,979.97	16.65	156,997,474.42	99.36	23,410,950.87	14.19
	195,413,401.93	99.57	32,527,979.97	16.65	156,997,474.42	99.36	23,410,950.87	14.91
	846,923.52	0.43	846,923.52	100.00	1,017,482.23	0.64	1,017,482.23	100.00
	196,260,325.45	100.00	33,374,903.49		158,014,956.65	100.00	24,428,433.10	

		%		%	
1	112,520,096.76	57.33	5,626,442.99	90,050,442.92	56.99
1 2	37,797,845.32	19.26	3,779,784.54	33,875,639.23	21.44
2 3	21,443,771.67	10.93	6,433,131.50	20,115,552.36	12.73
3 4	11,974,585.87	6.10	5,987,292.95	5,988,423.86	3.79
4 5	4,878,871.56	2.49	3,903,097.24	2,327,119.59	1.47
5	6,798,230.75	3.46	6,798,230.75	4,640,296.46	2.94
	195,413,401.93	99.57	32,527,979.97	156,997,474.42	99.36

846,923.52

		5	148,571.28	148,571.28
		5	68,316.89	68,316.89
		5	21,726.50	21,726.50
			238,614.67	238,614.67

				(%)
		20,614,750.00	1	10.50
		5,235,587.70	1-2	2.67
		5,000,000.00	1	2.55
		3,868,000.00	1	1.97
		3,500,000.00	1-2	1.78
		38,218,337.70		19.47

	265,441,996.26	2,451,654.46	262,990,341.80	249,081,920.08	1,006,259.65	248,075,660.43
	603,891.47		603,891.47	772,180.42		772,180.42
	9,882,735.53		9,882,735.53	8,024,551.56	607,598.69	7,416,952.87
	112,580,276.53	755,505.00	111,824,771.53	101,327,082.29	1,895,878.42	99,431,203.87
	204,337,761.84	2,323,797.56	202,013,964.28	270,325,301.73	1,254,097.37	269,071,204.36
	46,845,361.27		46,845,361.27			
(	1,689,381,438.30		1,689,381,438.30	1,075,346,377.18	266,689.43	1,075,079,687.75
)	2,329,073,461.20	5,530,957.02	2,323,542,504.18	1,704,877,413.26	5,030,523.56	1,699,846,889.70

	1,006,259.65	1,235,000.00	210,394.81			2,451,654.46
	607,598.69				607,598.69	
	1,895,878.42			129,425.62	1,010,947.80	755,505.00
	1,254,097.37	1,300,000.00	51,087.76	281,387.57		2,323,797.56
(	266,689.43				266,689.43	
)	5,030,523.56	2,535,000.00	261,482.57	410,813.19	1,885,235.92	5,530,957.02

2,535,000.00

(						
)						

---

	12,037,378.59	110,526,896.36
	8,300,000.00	8,300,000.00
	20,337,378.59	118,826,896.36
:		
	20,337,378.59	118,826,896.36

	(%)	(%)						
	49.00	49.00	78,930,146.59	54,399,712.86	24,530,433.73	142,124,206.55	3,119,234.84	

						(%)	(%)			
	9,800,000.00	11,978,953.52	58,425.07		12,037,378.59	49.00	49.00			1,470,000.00
	37,051,532.59	57,258,176.94	-57,258,176.94							
	44,696,735.52	41,289,765.90	-41,289,765.90							
	91,548,268.11	110,526,896.36	-98,489,517.77		12,037,378.59	49.00	49.00			1,470,000.00
	8,300,000.00	8,300,000.00			8,300,000.00	8.33	8.33			
	8,300,000.00	8,300,000.00			8,300,000.00					
	99,848,268.11	118,826,896.36	-98,489,517.77		20,337,378.59					1,470,000.00



	904,712,341.22		182,413,041.95	5,405,146.98	1,081,720,236.19
	499,458,925.02		91,231,218.95		590,690,143.97
	351,153,086.09		78,418,674.74	2,504,293.84	427,067,466.99
	20,120,062.70		6,780,890.14	1,578,894.04	25,322,058.80
	33,980,267.41		5,982,258.12	1,321,959.10	38,640,566.43
	324,741,040.12	19,105,622.00	57,437,122.77	3,508,794.25	397,774,990.64
	109,275,464.25	6,349,467.43	23,816,582.99		139,441,514.67
	188,760,083.68	11,386,470.23	27,178,558.30	1,714,533.55	225,610,578.66
	8,397,119.62	1,277,847.50	2,693,752.75	640,928.77	11,727,791.10
	18,308,372.57	91,836.84	3,748,228.73	1,153,331.93	20,995,106.21
	579,971,301.10		182,413,041.95	78,439,097.50	683,945,245.55
	390,183,460.77		91,231,218.95	30,166,050.42	451,248,629.30
	162,393,002.41		78,418,674.74	39,354,788.82	201,456,888.33
	11,722,943.08		6,780,890.14	4,909,565.52	13,594,267.70
	15,671,894.84		5,982,258.12	4,008,692.74	17,645,460.22
	579,971,301.10		182,413,041.95	78,439,097.50	683,945,245.55
	390,183,460.77		91,231,218.95	30,166,050.42	451,248,629.30
	162,393,002.41		78,418,674.74	39,354,788.82	201,456,888.33
	11,722,943.08		6,780,890.14	4,909,565.52	13,594,267.70
	15,671,894.84		5,982,258.12	4,008,692.74	17,645,460.22

57,437,122.77

63,094,761.10

60,966,756.89

15,912,394.64

24,325,034.88

3,193,227.36



---

	7,184,536.21		2012
	7,270,003.59		2012
	3,983,405.17		2012
	550,367.08		2012.2.24
	18,988,312.05		

---

	277,424,760.33	66,796,196.16	210,628,564.17
	277,424,760.33	66,796,196.16	210,628,564.17

	63,856,258.03		63,856,258.03	20,114,728.04	20,114,728.04
	12,743,258.02		12,743,258.02		
	12,342,620.72		12,342,620.72	10,552,040.22	10,552,040.22
	9,404,137.42		9,404,137.42		
	6,480,872.60		6,480,872.60		
	4,870,158.61		4,870,158.61		
	1,418,117.04		1,418,117.04		
-	854,281.16		854,281.16	2,342,081.26	2,342,081.26
	506,611.57		506,611.57		
	276,705.23		276,705.23	276,705.23	276,705.23
ERP	200,000.00		200,000.00		
	177,922.20		177,922.20		
	128,262.50		128,262.50		
	119,658.12		119,658.12		
	118,792.10		118,792.10		
	50,000.00		50,000.00		
				16,377,826.94	16,377,826.94
ERP				11,578,066.50	11,578,066.50
3#				2,999,859.00	2,999,859.00
				2,858,223.64	2,858,223.64
				1,373,482.49	1,373,482.49
				40,000.00	40,000.00
	<b>113,547,655.32</b>		<b>113,547,655.32</b>	<b>68,513,013.32</b>	<b>68,513,013.32</b>

						(%)				(%)	
	20,114,728.04	51,432,696.62	7,691,166.63				1	2,794,193.23	2,794,193.23	9.60	63,856,258.03
	10,552,040.22	14,132,598.76	12,342,018.26				2				12,342,620.72
		12,743,258.02					3				12,743,258.02
	30,666,768.26	78,308,553.40	20,033,184.89					2,794,193.23	2,794,193.23		88,942,136.77

1	156,479,608.74	70,497,334.40		226,976,943.14
(1).	156,356,868.74	57,904,905.32		214,261,774.06
(2). /	122,740.00	12,592,429.08		12,715,169.08
2	14,989,524.94	6,158,744.09		21,148,269.03
(1).	14,948,684.99	4,937,865.74		19,886,550.73
(2). /	40,839.95	1,220,878.35		1,261,718.30
3	141,490,083.80	70,497,334.40	6,158,744.09	205,828,674.11
(1).	141,408,183.75	57,904,905.32	4,937,865.74	194,375,223.33
(2). /	81,900.05	12,592,429.08	1,220,878.35	11,453,450.78
4				
(1).				
(2).				
5	141,490,083.80	70,497,334.40	6,158,744.09	205,828,674.11
(1).	141,408,183.75	57,904,905.32	4,937,865.74	194,375,223.33
(2). /	81,900.05	12,592,429.08	1,220,878.35	11,453,450.78

1 5,177,848.19

2 7,953,196.82 980,895.90

3 74,709,854.54

2011 6 20                      7,000.00

100%    453,572,000.00

84.64%    25%    100%

75%

15.36%    81,750,000.00

535,322,000.00

2011 6 30

335,575,703.23

2

1

2

948,671.48		598,527.28	350,144.20
948,671.48		598,527.28	350,144.20

	282,465.69	306,884.74
	268,659.34	109,204.96
	37,368,773.08	29,411,593.08
	2,212,991.57	1,093,542.60
	40,132,889.68	30,921,225.38

	231,339,183.11
	1,883,104.57
	1,074,637.35
	14,753,277.13
	249,050,202.16

206,743,401.63	7,298,216.61	35,144,542.61		10,065,277.01	239,120,883.84
5,030,523.56	2,535,000.00	261,482.57	410,813.19	1,885,235.92	5,530,957.02
211,773,925.19	9,833,216.61	35,406,025.18	410,813.19	11,950,512.93	244,651,840.86

		24,877,235.18
	328,000,000.00	288,000,000.00
	305,000,000.00	155,000,000.00
	633,000,000.00	467,877,235.18

	271,200,000.00	329,775,420.35
	26,971,629.89	18,845,624.13
	115,000,000.00	
	413,171,629.89	348,621,044.48

1	1,316,934,565.80	822,328,953.51
1-2	97,241,579.77	155,657,042.72
2-3	76,460,667.38	44,384,894.67
3	58,525,300.96	17,658,745.90
	1,549,162,113.91	1,040,029,636.80

Ä ó ÿ -Nq h - G6( •! NMA°?• L "¼ A Ä G6( • ž G6( x ç Ä

Ä BÚUXCYE› Ô H,X ûNq h -Bú! ™ %AÈ á Ö

BÚUXCYE› Ô H,X ûNq h -Bú! ?U Ú Û ¼!

È p4\$E@ s ´

2Ī @ Ì S y,X ¼! â î p4\$1k `!© È, ì h h - Ú Û ¼! p4\$1k `!© Ä

## 1 NX ! NM

Ä NX Bú! â4š V ß Ö

	NM,Ä	ó ÿ -Nq	H ñ -Nq
1 H 1 Y		472,682,446.81	529,619,865.15
1-2 H		286,043.24	1,721,095.67
2-3 H		122,779.90	13,896,259.26
3 H 1 P		11,404.04	573,986.71
	Ü A u	473,102,673.99	545,811,206.79

Ä ó ÿ -Nq ´NX Ö @ Ì Á 1 P Ä ÿ Á Ä > < ‡ 6u Ñ, X6u ð ) !! NM Ä

Ä ó ÿ -Nq ´NX G6( •! NM Ä

Ä ó ÿ -Nq ´BÚUXCYE› Ô H,X ûNqNX ! NM Ä

## h -6 1; ~G@

	NM,Ä	H ñ -Nq	ó r t	ó £ á	ó ÿ -Nq
Ä1 Ä 1C Ä *G¥ Ä"uC `>9C		23,220,280.99	266,325,894.50	258,834,415.93	30,711,759.56
Ä2 Ä6 ¼c ýC		552.00	12,751,916.37	12,752,468.37	
Ä3 Ä/ î ±L=C		2,561,964.58	34,620,839.53	33,953,671.87	3,229,132.24
J Ö Î O5Ö ±L=C		1,954,048.65	18,659,457.35	18,396,464.12	2,217,041.88
+k ±L=C		355,976.12	8,928,218.70	8,588,472.90	695,721.92
1 ø ±L=C		136,465.29	4,195,742.41	4,188,626.05	143,581.65
*ó6† ±L=C		24,414.72	705,678.44	677,836.85	52,256.31
î ±L=C		91,059.80	2,131,742.63	2,102,271.95	120,530.48
Ä4 Ä# @/ÄG¥		214,306.37	2,549,551.70	2,470,273.62	293,584.45
Ä5 Ä 1 î4£C ž6 1 -6†4£C		10,852,140.52	7,566,360.10	6,683,928.44	11,734,572.18
Ä6 Ä Jª			1,168.80	1,168.80	
	ÜAu	36,849,244.46	323,815,731.00	314,695,927.03	45,969,048.43



	12,753,857.46	26,821,449.59
	62,635,477.57	36,201,089.99
	1,788,279.39	809,510.01
	33,660,440.33	33,036,119.40
	371,273.76	-3,062,192.74
	1,353,096.66	495,559.87
	801,173.68	256,630.69
	1,579,383.24	1,256,672.47
	645,136.15	670,700.65
	3,844,367.64	3,712,898.42
	2,667,373.61	2,379,414.04
	64,312.21	6,473.75
	122,164,171.70	102,584,326.14

“ ”

	2,963,989.16	672,742.21
	2,963,989.16	672,742.21

	265,552.21	
	265,552.21	

1	45,514,873.39	43,369,400.66
1-2	4,426,829.56	16,023,447.94
2-3	6,025,964.65	11,966,121.61
3	8,891,209.50	8,755,585.12
	64,858,877.10	80,114,555.33

	133,346.29	
	133,346.29	

	8,179,988.00		
	3,888,585.06		
	2,515,873.93		
	1,609,631.28		
	1,212,602.00		
	17,406,680.27		

	80,651,520.00	
	80,651,520.00	

1		
	80,651,520.00	
	80,651,520.00	

2011

2

2011/6/15

(%)

2011

	1,000,000.00
	1,000,000.00

1									
2									
		387,000,000.00	6,066,000.00		193,500,000.00		199,566,000.00	586,566,000.00	
		387,000,000.00	6,066,000.00		193,500,000.00		199,566,000.00	586,566,000.00	

+  
1      2011    3    30      2010      2010      38,700      10      5  
19,350.00      58,050.00

[2011] 12436

2      2011    12    12      2011

606.60

606.60

58,656.60

[2011] 13735

		23,420,513.07	23,420,513.07
		23,420,513.07	23,420,513.07

2%

2011                      23,420,513.07                      23,420,513.07

1.	555,880,350.12	62,822,472.50	197,109,296.80	421,593,525.82
2.	2,155,419.97			2,155,419.97
	558,035,770.09	62,822,472.50	197,109,296.80	423,748,945.79

1                      2010

2011      7

8                      2011

28,064,292.50

28,064,292.50

2                      2011      12      12                      2011

606.60

6.73 /                      34,758,180.00

3                      2011      3      30                      2010                      2010

38,700                      10                      5

193,500,000.00

4                      2011      12

20%                      11,194,700.00

3,609,296.80

	66,558,949.15	21,187,134.60		87,746,083.75
	66,558,949.15	21,187,134.60		87,746,083.75

			597,283,762.08	
			279,794,147.47	
			21,187,134.60	10%
			19,350,000.00	
			836,540,774.95	

	2011	3	30	2010	
10		0.5			19,350,000.00

		5,679,073,556.60	5,286,771,690.00
		27,200,416.26	26,277,047.74
		4,888,546,217.17	4,681,362,518.82

1	5,644,336,192.98	4,849,218,301.08	4,732,597,099.11	4,163,391,634.76
2	34,737,363.62	28,254,195.22	554,174,590.89	515,469,758.43
	5,679,073,556.60	4,877,472,496.30	5,286,771,690.00	4,678,861,393.19

	5,644,336,192.98	4,849,218,301.08	4,732,597,099.11	4,163,391,634.76
	34,737,363.62	28,254,195.22	554,174,590.89	515,469,758.43
	5,679,073,556.60	4,877,472,496.30	5,286,771,690.00	4,678,861,393.19

	5,639,705,629.29	4,849,835,752.18	5,012,021,555.37	4,438,702,774.29
	39,367,927.31	27,636,744.12	274,750,134.63	240,158,618.90
	5,679,073,556.60	4,877,472,496.30	5,286,771,690.00	4,678,861,393.19

			(%)
	143,965,264.34		2.52
	139,129,989.00		2.44
	122,307,312.27		2.14
	112,142,168.87		1.97
	111,421,729.14		1.95
	628,966,463.62		11.02

	65,114,055.39	47,292,043.41
	5,574,884.04	2,344,013.42
	5,103,936.86	2,679,656.50
	4,058,149.14	3,535,220.24
	563,594.07	373,822.59
	80,414,619.50	56,224,756.16

	30,717,890.59	25,145,501.43
	11,923,391.96	22,217,003.43
	11,155,105.80	10,247,632.33
	10,455,745.71	11,303,013.19
	2,280,667.18	1,396,528.56
	1,729,257.46	1,973,426.41
	1,112,435.08	1,009,089.62
	12,621,259.23	13,796,698.52
	81,995,753.01	87,088,893.49

	89,668,161.56	63,677,517.78
	28,064,292.50	2,566,700.00
	22,656,338.17	19,069,567.42
	21,188,394.70	21,560,862.50
	9,160,819.13	8,212,031.56
	8,912,756.32	8,727,012.23
	5,124,877.36	5,007,292.65
	71,004,055.77	59,955,299.96
	255,779,695.51	188,776,284.10



		56,318,316.28	34,739,730.84
		5,207,245.04	7,019,393.50
		-5,973,584.53	2,094,993.95
		10,505,467.77	6,012,304.32
		55,642,954.48	35,827,635.61

		546,275.48	2,646,070.50
		2,691,297.27	12,899,157.26
		3,237,572.75	15,545,227.76

		35,145,130.01	39,846,884.33
		-149,330.62	-3,710,013.64
		34,995,799.39	36,136,870.69

1	153,057.42	835,067.59	153,057.42
	153,057.42	835,067.59	153,057.42
2	6,592,902.76	6,941,949.54	6,592,902.76
3	2,776,810.45	235,731.19	2,776,810.45
4	10,300.00	208,110.00	10,300.00
5	20,000.00	477,933.45	20,000.00
6	1,035,741.38	1,550,329.56	1,035,741.38
7	2,173,320.96	826,875.60	2,173,320.96
	12,762,132.97	11,075,996.93	12,762,132.97

---

1		
2		
(1)		1,094,500.00
(2)		210,000.00
(3)	300,000.00	417,400.00
(4)		20,744.00
(5)	1,323,000.00	763,293.76
(6)		104,295.00
(7)		1,320,000.00
(8)		1,245,000.00
(9)	630,000.00	245,909.74
(10)		200,000.00
(11)	622,900.00	350,000.00
(12)		269,976.64
(13)	2,122,000.00	700,830.40
(14)	570,000.00	
(15)	200,000.00	
(16)	360,000.00	
(17)	100,000.00	
(18)	203,856.06	
(19)	10,700.00	
(20)	150,446.70	
	6,592,902.76	6,941,949.54
	6,592,902.76	6,941,949.54

---

1	1,298,817.10	1,482,668.44	1,298,817.10
	1,144,842.50	1,482,668.44	1,144,842.50
	153,974.60		153,974.60
2	1,493,000.00	1,263,000.00	1,493,000.00
3	1,510.39	2,370,000.00	1,510.39
4	479,249.10	689,446.68	479,249.10
	3,272,576.59	5,805,115.12	3,272,576.59

	48,671,969.70	32,766,182.45
	-7,218,473.83	-3,683,852.50
	41,453,495.87	29,082,329.95

$$=P0 \div S$$

$$S = \frac{S0 + S1 + \frac{Si \times Mi}{M0} - \frac{Sj \times Mj}{M0} - Sk}{P0}$$

$$=P1 / (S0 + S1 + \frac{Si \times Mi}{M0} - \frac{Sj \times Mj}{M0} - Sk + )$$

P1

1

		279,794,147.47	223,139,006.66
		580,500,000.00	580,500,000.00
	/	0.48	0.38

2011 3 30 2010 2010 38,700.00  
 10 5 19,350.00  
 58,050.00  
 580,500,000.00 2010

		580,500,000.00	580,500,000.00
		6,066,000.00	
		580,500,000.00	580,500,000.00

2

		279,794,147.47	223,139,006.66
		584,345,416.11	580,500,000.00
	/	0.48	0.38

BEî6u,X t G D Ä/ÔGž ÅAu1kE>/ß V ß		
NM,Â	óG¥Nq	Ð óG¥Nq
Au1k Í !£6u ,ž Ê H ÿ ¥> ü ê,X B		
Eî6u t G D	580,500,000.00	580,500,000.00
ó ¥> ,X BEî6u t D,X E j		
6u Ñ ó ,X E j	3,845,416.11	
H ÿ BEî6u,X t G D Ä/ÔGž Å	584,345,416.11	580,500,000.00

- - **J<sup>a</sup>4Ð Ü ,ž**

NM,Â	óG¥Nq	Ð óG¥Nq
1. Ä o Í G¥=aC { { *ó,X ý k Ä 3 ÄG¥Nq £ Ö Ä o Í G¥=aC { { *ó,X k/â E j ! óAu 9 J <sup>a</sup> 4Ð Ü ,ž ' óE@ 9 3,ž,X "Nq ãAu		
2. Ý'; ,ž"© 1k,X ü>• iC ) ! J <sup>a</sup> 4Ð Ü ,ž • Ý,X ÑNq £ Ö Ý'; ,ž"© 1k,X ü>• iC ) ! J <sup>a</sup> 4Ð Ü ,ž • Ý,X ÑNq { *ó,X k/â E j ! óAu 9 J <sup>a</sup> 4Ð Ü ,ž ' óE@ 9 3,ž,X "Nq ãAu		
3.),G¥# G£ + ó ' K { *ó,X ý k Ä ê 3 ÄG¥Nq £ Ö),G¥# G£ + ó ' K { *ó,X k/â E j ! óAu 9 J <sup>a</sup> 4Ð Ü ,ž ' óE@ 9 3,ž,X "Nq E@ >• + óNM,Â ñ Ý.BAxG¥Nq,XAx H ãAu		
4. ê ÖBõ u y>< l1k ÄNq £ Ö Ø5B W ê4£9ù ' óE@ 9 3,ž,X "Nq ãAu	420,252.35	-551,852.52
5. J <sup>a</sup> £ Ö+ J <sup>a</sup> Au 9 J <sup>a</sup> 4Ð Ü ,ž { *ó,X k/â E j ! ó J <sup>a</sup> Au 9 J <sup>a</sup> 4Ð Ü ,ž ' óE@ 9 3,ž,X "Nq ãAu		
ÜAu	420,252.35	-551,852.52

---

	32,616,231.38
	21,814,905.32
	18,425,417.31
	5,207,245.04
	6,601,710.35
	7,592,902.76
	4,226,000.00
	17,982,672.41
	114,467,084.57

---

	67,402,714.58
	39,407,980.09
	21,270,058.00
	20,067,862.12
	19,616,564.84
	13,986,188.00
	11,923,391.96
	10,505,467.77
	6,854,134.82
	7,533,054.36
	6,316,525.55
	5,518,906.40
	3,703,662.14
	99,119,710.39
	333,226,221.02

		34,500,000.00
		34,500,000.00

1			
		280,172,567.06	219,365,558.49
		34,995,799.39	36,136,870.69
		58,881,250.80	68,923,323.96
		5,177,848.19	4,527,157.22
		598,527.28	1,242,673.33
	“ ”	1,145,759.68	647,600.85
	“ ”		
	“ ”		
	“ ”	47,801,751.72	35,362,715.09
	“ ”	-3,237,572.75	-15,545,227.77
	“ ”	-7,218,473.83	-3,683,852.50
	“ ”		
	“ ”	-445,374,592.77	-540,934,449.24
	“ ”	4,255,443.38	-71,144,360.88
	“ ”	104,383,947.00	383,329,319.53
		29,324,081.78	-4,007,166.37
		110,906,336.93	114,220,162.42
2			

3		
	375,437,391.83	374,083,237.97
	374,083,237.97	397,357,465.40
	1,354,153.86	-23,274,227.43

1	535,322,000.00	5,000,000.00
2	535,322,000.00	5,000,000.00
	22,958,298.44	329,542.51
3	512,363,701.56	4,670,457.49
4	192,948,913.93	4,868,257.93
	430,234,621.38	9,378,753.52
	68,473,293.33	22,782,310.31
	-305,759,000.78	-27,292,805.90
1		220,300,000.00
2		121,165,000.00
		67,287,695.51
3		53,877,304.49
4		180,423,730.20
		401,553,356.59
		301,250,220.42
		322,379,846.81
		200,000,000.00



	375,437,391.83	374,083,237.97
	684,461.29	718,111.33
	308,981,473.65	268,523,877.97
	65,771,456.89	104,841,248.67
	375,437,391.83	374,083,237.97

461,922,391.69

86,484,999.86

						(%)	(%)	
					32,000	33.40	33.40	74702069-1

:

						(%)	(%)	
					900	99.94	99.94	76391743-1
					550	99.94	99.94	76253883-5
					8,000	100.00	100.00	79779326-2
					50	100.00	100.00	
					5,300	100.00	100.00	55752383-7
					5,000	99.68	99.68	71252825-X

							(%)	(%)	
						1,500	100.00	100.00	76477663-4
						5,000	100.00	100.00	73540949-9
						500	99.94	99.94	78199019-X
						2,910	100.00	100.00	68880988-6
						5,000	100.00	100.00	75341661-7
			Cayman. Island.B.W.I			1,050	99.76	99.76	
			Cayman. Island.B.W.I			1,500	99.76	99.76	
						1,100	99.76	99.76	60728866-1
						1	99.76	99.76	
						1	99.76	99.76	
						10	99.68	99.68	
						9,500	99.76	99.76	
						3,990	99.76	99.76	
						800	99.68	99.68	57346709-7
						400	99.68	99.68	58620397-1

							(%)	(%)	
						100	99.76	99.76	58610750-9
						2	99.76	99.76	
						500	99.80	99.80	77578947-3
						228	99.79	99.79	76520846-0
						500	99.76	99.76	77021295-8
						2,500	99.80	99.80	69726995-7

							(%)	(%)	
					2,000.00	49.00	49.00		76628136-0

		76479600-2
		77736336-1
		73383573-4
		76132629-1
		79014449-7
Success Charm Int'l Holding Limited( )		
		66075172-3
		74213917-5
		60966193-3
		76253376-X
		77075868-5
		71327080-1
		72362956-6
		73840053-7
		69829300-0
		60966291-X
		74702069-1
		67758731-7
		73910986-4
		66075172-3
		69899130-0
		77314155-0

1-6

7-12

				(%)		(%)
			83.80	3.29	4.18	0.87
			395.98	0.08	1,607.61	0.37
			119.53	0.02		
			287.25	0.06	271.13	0.06
			494.14	0.10	180.14	0.04
			2,345.85	0.47	836.16	0.19
			366.11	0.08		
			96.63	3.79		
			150.00	0.03		
			<b>5,313.92</b>		<b>2,899.22</b>	

1						
		968.65				
2				5.98		
3						83.80
4						
	395.98					
5						
	119.53					
6						
	255.37	3.63		28.25		



				(%)		(%)
			73.00	0.01	224.49	0.04
			253.90	0.04	996.27	0.19
			864.29	0.15		
			0.03	0.00		
			11.79	0.00		
			0.06	0.00		
			6.92	0.00		
			3.19	0.00		
			1,163.96	0.20		
			<b>5,752.97</b>		<b>7,759.00</b>	

			2011.01.01	2011.06.30		14,759.28
			2011.01.01	2011.08.31		31,028.40
			2011.01.01	2011.12.31		799,618.68



			2011.01.01	2011.06.30	61,326.72
			2011.05.01	2011.06.30	20,685.60
			2011.01.01	2011.06.30	369,471.60
				159	14 15
16				2,545.55	

		20,000,000.00	2011/4/29	2012/4/25	
		10,000,000.00	2011/5/4	2012/4/25	
		10,000,000.00	2011/4/2	2012/3/24	
		49,609,096.54	2011/11/29	2012/11/28	
		45,000,000.00	2011/6/15	2015/6/14	
		50,000,000.00	2011/8/26	2012/8/25	
		35,000,000.00	2011/9/15	2012/10/28	
		6,164,900.00	2011/3/8	2012/6/14	
		23,000,000.00	2011/11/17	2012/2/17	
		60,000,000.00	2011/12/19	2012/3/20	
		60,000,000.00	2011/10/9	2012/4/24	
		115,000,000.00	2011/10/13	2012/5/25	
		2,163,881.70	2011/9/14	2013/9/14	
		2,749,395.00	2011/11/17	2013/11/17	
		10,000,000.00	2011/11/17	2013/11/17	
		5,000,000.00	2011/9/21	2012/3/21	

					75,437,840.44	,			
24,900,000					16,037,840.44				34,500,000.00
1	2011	12	31						
20,000,000.00							2011	4	29
4	25								2012
2	2011	12	31						
10,000,000.00							2011	5	4
4	25								2012
3	2011	12	31						
10,000,000.00							2011	4	2
3	24								2012
4	2011	12	31						
49,609,096.54							2011	11	29
11	28								2012
5	2011	12	31						
45,000,000.00							6,400,000.00		
2011	6	15		2012	6	14	6,400,000.00		2011
15	2012	12	14		6,400,000.00			2011	6
2013	6	14		6,400,000.00			2011	6	15
14	6,400,000.00						2011	6	15
6,400,000.00							2014	12	14
					2011	6	15	2014	12
									14
					2011	6	15	2015	6
									14
6	2011	12	31						
50,000,000.00							2011	8	26
8	25								2012
7	2011	12	31						
35,000,000.00							30,000,000.00		2011
9	15	2012	9	15	5,000,000.00		2011	10	28
10	28								2012

8	2011	12	31		6,725,976.31		5,76,827.99					
				(2005)	C.B:9057							
					130,000,000.00							
50,000,000.00				2011	3	8	2012	3	7	30,000,000.00		
		2011	4	8	2012	4	7	30,000,000.00		2011		
5	9	2012	5	8	20,000,000.00		2011	6	15			
2012	6	14										
9	2011	12	31		6,725,976.31		5,76,827.99					
				(2005)	C.B:9057							
					23,000,000.00							
	2011	11	17	2012	2	17						
10	2011	12	31									
60,000,000.00							2011	12	19			
	2012	3	20									
11	2011	12	31									
60,000,000.00							20,000,000.00					
	2011	10	26	2012	1	26	20,000,000.00			2011		
	10	9	2012	1	9	20,000,000.00		2011	10	24		
		2012	4	24								
	12	2011	12	31								
115,000,000.00							45,000,000.00			2011		
	10	13	2012	4	10	70,000,000.00		2011	11			
29	2012	5	25									
	13	2011	12	31						2,163,881.70		
							2011	9	14	2013	9	14
	14	2011	12	31								
2,749,395.00							2011	11	17	2013	11	
	17											
	15	2011	12	31								
10,000,000.00							2011	11	17	2013		
11	17											
	16	2011	12	31								
							5,000,000.00		2011	9	21	
2012	3	21										



**1**

		634.22	50.77	381.08	19.05
		265.87	25.16	308.34	15.42
		2.80	0.14	3.00	0.30
		56.00	2.80		
		0.53	0.03		
				1,053.10	52.66
				385.80	19.29
				57.00	2.85
				13.47	0.67
				0.20	0.01
		110.19		13.69	
		52.84			
		3.58			
		0.04	0.00	80.04	4.00
		4.30	1.29	2.31	0.12

		1.87	0.09	1.28	0.06
		80.00	4.00		
		2.46	0.12		
		5.37	0.27		
				7.74	0.39

1 180.00

2 606.60

3 129

4

(1) 6.73 / , 2010 12

10 4 3

(2) 12.82 / 2011 7 8

3.4 3

5

2010 7 26 2010

1 /2 /3

2010 11 19 2010

2010 12 6 2010

2010 12 13 2010

2010 12 10

1,100

2011 7 8 2011

1,100

1,650 6.73

2011 7 8 2011

,

2011 7 8 , 12.82

180

2011 8 27 2011

112				8		
	2			1		
129						101
606.6			2011	12	12	
2011	12	12				606.60
						3,475.82
				2,806.43		3,063.10

Black-Scholes

Black-Scholes

						3,063.10
						2,806.43
						112
	8					2
1						129

						53,504.05
						17,448.00

1	2011	12	31			34,500,000.00
						34,941,223.06
6,221,422.86						



2	2011	12	31		11,557,188.51		
				31,660,958.40			
				2,326,109.68			
3	2011	12	31		6,091,178.71		
4	2011	12	31		17,707.04		
				4,500,000.00			
5	2011	12	31		14,000,000.40		
				5,922,659.86			
				506,008.23			
6	2011	12	31		12,000.00		
7				17,268,547.81	11,013,810.55		
				14602	21,900,000.00	16,287,371.00	
					GF-1104)	015	
				31,000,000.00			2011 9
14	2012	9	13				
8				4,482,637.03	2,402,661.39		
				05878	5,427,657.36	2,819,741.17	
					05732	9,962,543.54	
				6,139,125.13		15751	
				21,900,000.00	16,287,371.00		GF-1104)
				015		27,000,000.00	
				2011 11 14	2012 9 28		
9				51,650,198.20	318,891,01.91		
				05731	21,900,000.00	16,287,371.00	
					GF-1104)	015	

				5,000,000.00			
	2011	12	26	2012	3	26	
10				7,480,000.00			2011 12 8
	2012	5	8				
	7,480,000.00						2011 12 19
	2012	6	19				
11				15,000,000.00			
	15,000,000.00						2011 12
20	2012	3	20				
12				56,152,927.02		46,227,098.63	
	(2008)		020054				48,000,000.00
					2011	7	1
					2012	6	21
13				2,634,072.00		2,297,420.32	
	(2005)		C.B 9055				8,354,155.95
	7,119,205.82					427450	
	1,036,153.69	,	917,352.14				457685
			13,694,341.00			12,148,972.51	
	2006		1064			45,313,024.59	35,064,568.26
					19	200900889	
2,423,803.44			1,876,933.08				19
200900888			4,656,938.18			3,606,216.83	
			19	200905883			20,300,000.00
	19,103,683.20						2009 3479
							130,000,000.00
			50,000,000.00				2011 3 8
7	30,000,000.00				2011	4	8
					2012	4	7
30,000,000.00				2011	5	9	2012 5 8
							20,000,000.00
	2011	6	15	2012	6	14	
14				2,634,072.00		2,297,420.32	
	(2005)		C.B 9055				8,354,155.95

---

7, 119,205.82			427450	
1,036,153.69	,	917,352.14		457685
		13,694,341 .00	12,148,972.51	
2006	1064		45,313,024.59	35,064,568.26
			19	200900889
2,423,803.44		1,876,933.08		19
200900888		4,656,938.18	3,606,216.83	
	19	200905883		20,300,000.00
19,103,683.20			2009	3479

17	10,371,952.19	8,150,372.02		
	31233	04364	12,108,127.50	
	1,1105,087.28		2008 6-10	
		30,000,000.00		
	2011 9 2	2012 9 1		
18	1,639,400.76	1,598,415.76		
	62452	1,639,400.76	1,598,415.76	
		62453	1,639,400.76	1,598,415.76
			62454	1,639,400.76
1,598,415.76	(		62455 )	1,639,400.76
	1,598,415.76			62456
1,639,400.76	1,598,415.76			62457
	1,639,400.76	1,598,415.76		
	62458	1,639,400.76	1,598,415.76	
		62459	1,639,400.76	1,598,415.76
			62460	1,639,353.79
				1,598,369.27
			62461	4,435,227.58
4,161,721.73			2010 6-74	
		12,000,000.00		
	2011 6 23	2012 6 22		

1	2012 1 16	2012	
		100%	
			81.00%
			10.00%
		9.00%	
		2010 12 31	
	52,979	13,865	25,800

2011

---

			100%		2012	85.50%	2013
		14.50%					
2012	3	13	85.50%				
2	2011	12	7		2011		
		312.50					
	612.50					51%	
2012	2	10					
2011	10	10	2011				
						7	7
					5	5	
2012	1	9					

		%		%		%		%
1	100,614,721.42	79.57	4,568,259.11	4.54	96,133,839.85	78.46	3,629,985.43	3.78
1 2	13,021,993.93	10.30	1,167,982.70	8.97	1,488,252.45	1.21	148,825.25	10.00
2 3					4,266,184.83	3.48	1,279,855.45	30.00
3 4	1,008,674.50	0.80	504,337.25	50.00	18,915,774.97	15.44	9,457,887.49	50.00
4 5	11,795,886.49	9.33	9,436,709.19	80.00	1,725,000.00	1.41	1,380,000.00	80.00
	126,441,276.34	100.00	15,677,288.25		122,529,052.10	100.00	15,896,553.62	

		%		%		%		%
1	115,849,570.07	91.62	15,677,288.25	13.53	98,994,921.18	80.79	15,896,553.62	16.06
3	10,591,706.27	8.38			23,534,130.92	19.21		
	126,441,276.34	100.00	15,677,288.25	12.40	122,529,052.10	100.00	15,896,553.62	12.97
	126,441,276.34	100.00	15,677,288.25		122,529,052.10	100.00	15,896,553.62	

1

		%			%	
1	91,365,182.12	72.26	4,568,259.11	72,599,708.93	59.25	3,629,985.43
1 2	11,679,826.96	9.24	1,167,982.70	1,488,252.45	1.21	148,825.25
2 3				4,266,184.83	3.48	1,279,855.45
3 4	1,008,674.50	0.80	504,337.25	18,915,774.97	15.44	9,457,887.49
4 5	11,795,886.49	9.33	9,436,709.19	1,725,000.00	1.41	1,380,000.00
	115,849,570.07	91.63	15,677,288.25	98,994,921.18	80.79	15,896,553.62

3

	406,388.98				
	4,671,535.73				
	3,932,340.82				
	1,422,198.16				
	112,367.57				
	40,011.01				
	6,864.00				
	10,591,706.27				

				(%)
		16,757,240.00	1	13.25
		12,938,591.83	0-2	10.23
		12,341,726.88	0-5	9.76
		12,000,000.00	1	9.49
		11,292,449.71	1	8.93
		65,330,008.42		51.66

				(%)
		2,658,577.53		2.10

		%		%		%		%
1	355,652,585.04	96.08	443,145.87	0.12	120,320,551.08	96.16	394,184.59	0.33
1 2	10,163,032.34	2.75	383,772.83	3.78	2,001,865.69	1.60	200,186.57	10.00
2 3	2,665,452.00	0.72	799,635.61	30.00	1,802,211.01	1.44	540,663.30	30.00
3 4	756,524.20	0.20	378,262.10	50.00	527,451.18	0.42	263,725.59	50.00
4 5	464,451.18	0.13	371,560.94	80.00	473,308.00	0.38	378,646.40	80.00
5	451,634.00	0.12	451,634.00	100.00				
	370,153,678.76	100.00	2,828,011.35		125,125,386.96	100.00	1,777,406.45	



		%		%		%		%
1	17,038,707.10	4.60	2,828,011.35	16.60	12,888,627.53	10.30	1,777,406.45	13.79
3	353,114,971.66	95.40			112,236,759.43	89.70		
	370,153,678.76	100.00	2,828,011.35	0.76	125,125,386.96	100.00	1,777,406.45	1.42
	370,153,678.76	100.00	2,828,011.35		125,125,386.96	100.00	1,777,406.45	

1

		%		%	
1	8,862,917.44	2.39	443,145.87	6.46	394,184.59
1 2	3,837,728.28	1.04	383,772.83	1.60	200,186.57
2 3	2,665,452.00	0.72	799,635.61	1.44	540,663.30
3 4	756,524.20	0.20	378,262.10	0.42	263,725.59
4 5	464,451.18	0.13	371,560.94	0.38	378,646.40
5	451,634.00	0.12	451,634.00		
	17,038,707.10	4.60	2,828,011.35	10.30	1,777,406.45

3

	189,305,336.11		
	67,842,581.63		
	32,307,599.98		
	21,446,362.48		
	17,000,000.00		
	11,173,038.31		
	10,000,000.00		
	3,572,142.97		
	292,871.74		
	175,038.44		
	353,114,971.66		

				(%)
	189,305,336.11	0-2		51.14
	67,842,581.63	1		18.33
	32,307,599.98	1		8.73
	21,446,362.48	1		5.79
	17,000,000.00	1		4.59
	327,901,880.20			88.58

						(%)	(%)			
	9,800,000.00	11,978,953.52	58,425.07		12,037,378.59	49.00	49.00			1,470,000.00
	13,687,971.53	15,868,239.75	-15,868,239.75							
	38,660,833.68	38,660,833.68	-38,660,833.68							
	62,148,805.21	66,508,026.95	-54,470,648.36		12,037,378.59					1,470,000.00
	441,370,616.21	441,370,616.21			441,370,616.21	95.68	95.68			79,400,110.62
	46,482,632.93	46,482,632.93			46,482,632.93	75.00	75.00			119,401,177.23
	31,252,986.00	31,252,986.00			31,252,986.00	75.00	75.00			17,143,580.74
	620,759.83	49,620,759.83			49,620,759.83	100.00	100.00			
	51,271,487.04	51,271,487.04	11,341,036.00		62,612,523.04	100.00	100.00			

							(%)	(%)				
	80,000,000.00	80,000,000.00				80,000,000.00	100.00	100.00				
	179,634,439.93	179,634,439.93				179,634,439.93	26.32	26.32				
	2,527,700.00	2,527,700.00				2,527,700.00	100.00	100.00				
	13,439,704.44	13,439,704.44				13,439,704.44	100.00	100.00				
	28,809,232.27	28,809,232.27				28,809,232.27	100.00	100.00				
	4,868,257.93	4,868,257.93	47,347,193.20			52,215,451.13	100.00	100.00				
	880,277,816.58	929,277,816.58	58,688,229.20			987,966,045.78					215,944,868.59	
	8,300,000.00	8,300,000.00				8,300,000.00	8.33	8.33				
			81,750,000.00			81,750,000.00	15.36	15.36				
	8,300,000.00	8,300,000.00	81,750,000.00			90,050,000.00						
	888,577,816.58	937,577,816.58	140,438,229.20			1,078,016,045.78					215,944,868.59	
	<b>950,726,621.79</b>	<b>1,004,085,843.53</b>	<b>85,967,580.84</b>			<b>1,090,053,424.37</b>					<b>217,414,868.59</b>	

	741,471,753.83	495,939,122.88
	13,112,805.62	12,224,504.36
	674,460,367.05	467,564,482.94

	741,471,753.83	674,089,105.25	495,939,122.88	464,278,665.47
	741,471,753.83	674,089,105.25	495,939,122.88	464,278,665.47

	741,471,753.83	674,089,105.25	495,939,122.88	464,278,665.47
	741,471,753.83	674,089,105.25	495,939,122.88	464,278,665.47

	741,471,753.83	674,089,105.25	495,939,122.88	464,278,665.47
	741,471,753.83	674,089,105.25	495,939,122.88	464,278,665.47

			(%)
	112,142,168.87		14.86
	92,140,902.33		12.21
	66,563,664.01		8.82
	55,206,310.25		7.32
	36,886,473.65		4.89
	362,939,519.11		48.10

	215,944,868.59	92,061,677.18
	-648,631.51	1,712,897.44
	14,168,083.15	1,254,126.21
	229,464,320.23	95,028,700.83
1		
	211,871,345.96	86,127,916.24
	831,339.53	5,031,687.37
	9,932,902.82	9,393,166.94
	1,471,773.18	275,944.52
	77,927.26	122,038.80
“ ”	271,807.43	49,198.40
“ ”		
“ ”		
“ ”	26,131,626.86	8,579,438.58
“ ”	-229,464,320.23	-95,028,700.83
“ ”	-124,700.94	-228,678.15
“ ”		
“ ”	-48,877,957.60	-31,390,108.61
“ ”	-399,086,830.66	-83,086,211.83
“ ”	231,703,238.87	-51,682,339.60
	28,064,292.50	
	-167,197,555.02	-151,836,648.17
2		
3		
	74,794,170.09	74,669,672.78
	74,669,672.78	16,727,023.07

2011

---

	124,497.31	57,942,649.71

---

---

		12,329,424.93
		-1,439,361.64
		-12,927.73
		10,877,135.56

---



			(%)
	1,549,162,113.91	1,040,029,636.80	48.95
	2,963,989.16	672,742.21	340.58
	210,763,663.35	8,375,929.08	2416.30
	586,566,000.00	387,000,000.00	51.57
	87,746,083.75	66,558,949.15	31.83
	4,724,497.19	12,343,369.01	-61.72

			(%)
	80,414,619.50	56,224,756.16	43.02
	255,779,695.51	188,776,284.10	35.49
	55,642,954.48	35,827,635.61	55.31
	3,237,572.75	15,545,227.76	-79.17
	3,272,576.59	5,805,115.12	-43.63

		22,751,061.34	-100.00
	333,226,221.02	186,737,220.78	78.45
	98,983,554.72		
	1,470,000.00	3,094,098.42	-52.49
	773,963.71	12,822,136.15	-93.96

		53,877,304.49	-100.00	
	117,407,085.44	86,479,539.20	35.76	
	48,091,036.00			
	512,363,701.56			
	40,824,180.00			
	1,216,699,000.00	842,017,934.02	44.50	
		13,126,646.00	-100.00	
	76,371,841.85	42,897,356.61	78.03	
	34,500,000.00			
	809,264.26	-622,984.25	-229.90	

2012 3 26

1

2

3

2012 3 28