

600496

2010

.....	3
.....	3
.....	4
.....	6
.....	10
.....	18
.....	23
.....	24
.....	41
.....	42
.....	57
.....	159

	237161
	http://www.600496.com
	600496@jgsteel.cn

	http://www.sse.com.cn

A			600496	G

		1999 6 28
		2009 11 20
		340000000022295
		342401711774045
		71177404-5
		61 4

	243,177,006.63
	248,447,888.44
	223,139,006.66
	206,908,784.66
	114,220,162.42

	12,251,556.42
	6,941,949.54

	-131,742.07
	-1,023,466.88
	-1,766,552.14
	-41,522.87
	16,230,222.00

	2010	2009	(%)	2008
	5,313,048,737.74	4,509,837,470.39	17.81	4,587,715,136.04
	248,447,888.44	255,018,340.03	-2.58	156,263,476.24
	223,139,006.66	192,200,582.02	16.10	125,343,902.89
	206,908,784.66	174,861,739.66	18.33	99,888,218.21
	114,220,162.42	191,633,529.02		

1

		(%)							(%)
	4,200	10.85				-4,200	-4,200		
1									
2									
3	4,200	10.85				-4,200	-4,200		
	3,200	8.27				-3,200	-3,200		
	1,000	2.58				-1,000	-1,000		
	34,500	89.15				4,200	4,200	38,700	100
1	34,500	89.15				4,200	4,200	38,700	100
2									
3									
4									
	38,700	100						38,700	100

2009 10 15

[2009]1079

5,000 5,000

2009 11 9 4,200

2010 11 10 4,200

2

	1,000	1,000	0	0		2010 11 10
	600	600	0	0		2010 11 10

2010

	600	600	0	0		2010 11 10
	500	500	0	0		2010 11 10
	500	500	0	0		2010 11 10
	500	500	0	0		2010 11 10
	500	500	0	0		2010 11 10
	4,200	4,200	0	0	/	/

1

:

A	2009 11 9	8.39	4,200	2010 11 10		4,200

[2009]1079

2009

11 9

7

4200

12

2010 11

10

2

3

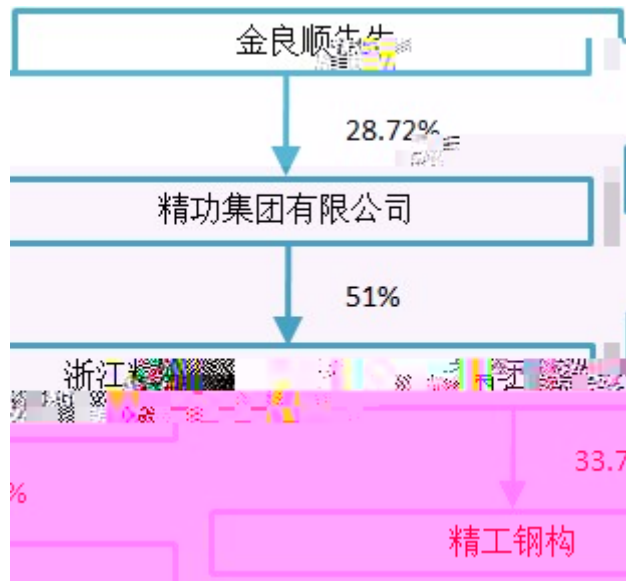
1

						27,941
		(%)				
		33.75	130,627,153	7,739,289	0	87,750,000

		3.43	13,267,319	13,267,319	0	
		2.58	10,000,000	0	0	
-		2.39	9,256,756	9,256,756	0	
-		1.81	7,000,000	7,000,000	0	
		1.64	6,359,971	6,359,971	0	
-		1.39	5,373,812	5,373,812	0	
-		1.37	5,287,194	5,287,194	0	
		1.15	4,438,594	4,438,594	0	
-		1.09	4,204,935	4,204,935	0	
			130,627,153	130,627,153		
			13,267,319	13,267,319		
			10,000,000	10,000,000		
-			9,256,756	9,256,756		
-			7,000,000	7,000,000		
			6,359,971	6,359,971		
-			5,373,812	5,373,812		
-			5,287,194	5,287,194		
			4,438,594	4,438,594		
-			4,204,935	4,204,935		

5	

4



3

			44	2009 7 30	2012 7 31	0	0	55	
			54	2009 7 30	2012 7 31	0	0	21	
			46	2009 7	2012 7	0	0	55	

				30	31				
			42	2009 7 30	2012 7 31	0	0	0	
			42	2009 7 30	2012 7 31	0	0	46	
			49	2009 7 30	2012 7 31	0	0	0	
			41	2009 7 30	2012 7 31	0	0	5	
			46	2009 7 30	2012 7 31	0	0	5	
			50	2009 7 30	2012 7 31	0	0	5	
			35	2010 5 22	2012 7 31	0	0	0	
			35	2009 7 30	2012 7 31	0	0	27	
			44	2009 7 30	2012 7 31	0	0	25	
			45	2009 7 30	2012 7 31	0	0	48	
			48	2009 7 30	2012 7 31	0	0	55	
			49	2009 7 30	2012 7 31	0	0	56	
			45	2010 3 8	2012 7 31	0	0	40	
			35	2009 7 30	2012 7 31	0	0	32	
			35	2009 7 30	2010 5 22	0	0	0	
			37	2009 7 30	2010 8 9	0	0	17	
	/	/	/	/	/	0	0	492	/

EMBA

EMBA MBA EDP

COLEMAN

2002

Academy of Management

5%

2005

2%

AT&T, Ericson Eli Lilly Habitat AstraZeneca Allen & Overy
Capitaland Golden Gate Software

C



			2009 6 30	2012 6 29	
			2009 6 30	2012 6 29	
			2009 1 1	2012 12 31	
			2009 6 30	2012 6 29	
			2009 6 30	2012 6 29	



1

2

3

3

4

4

5

"

"

6

7

,

2

1

		12	1	11	0	0	
		12	1	11	0	0	
		12	1	11	0	0	
		12	0	11	1	0	
		12	1	11	0	0	
		12	1	11	0	0	
		12	1	11	0	0	
		12	1	11	0	0	
		12	1	11	0	0	

	12
	1
	11
	0

2

2010

2010

3

	2009
--	------

	2009
	1600 4800
	" "
	2009 30

112

1100

2010

- 1 www.sse.com.cn www.600496.com
- 2 www.sse.com.cn www.600496.com
- www.sse.com.cn www.600496.com

2009	2010 5 22		2010 5 25

2010	2010 9 19		2010 9 21
2010	2010 11 24		2010 11 25

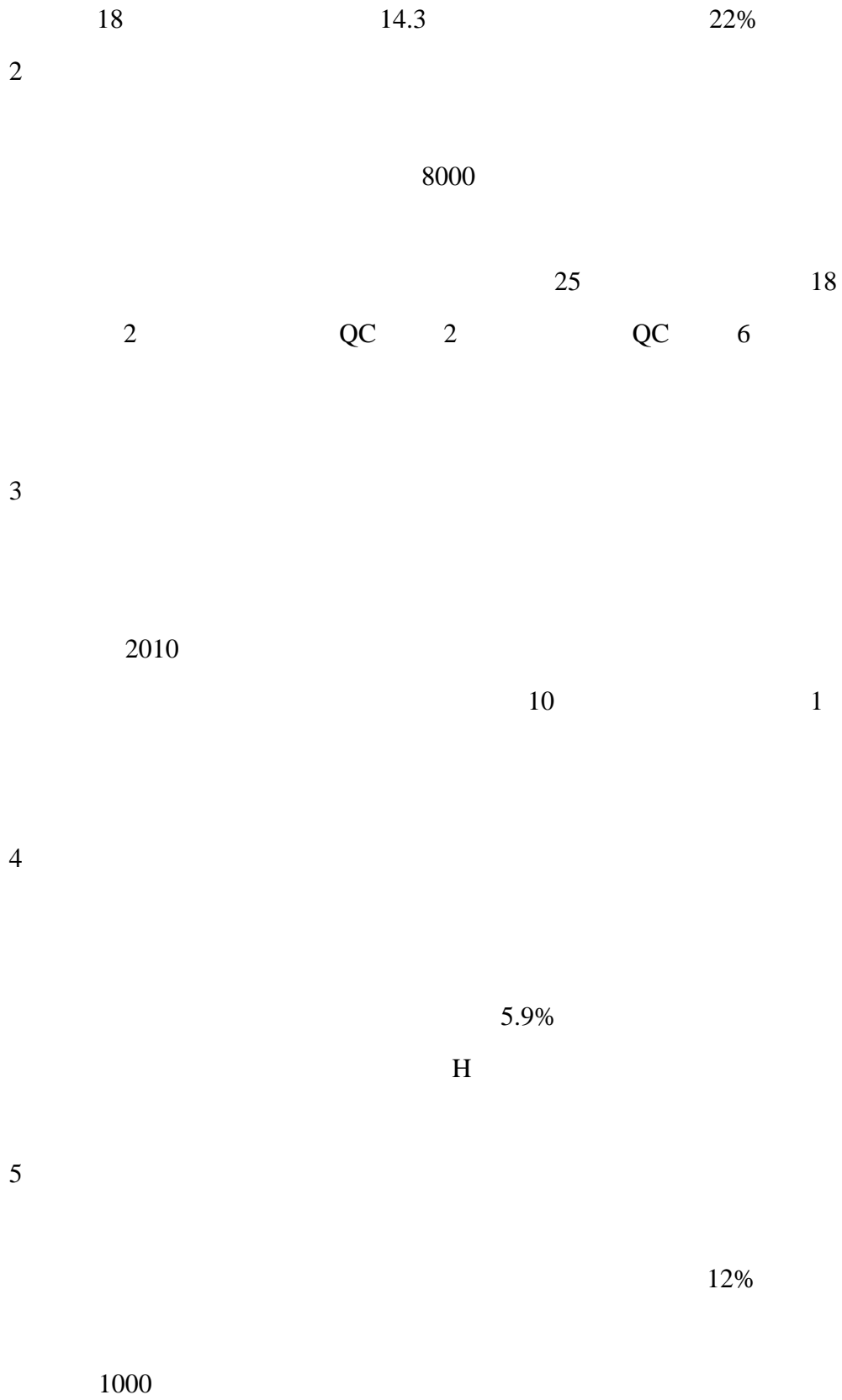
2010	2010 12 6		2010 12 7
*			

* 2010

2010

				64.5
	32%	53		18%
	2.2		16%	39
11%				
				64.5
	32%	5000	35	39
	15	25		10
70%				2.1
	2.1			2
	2		2	
2			2	
				1.7
			1.6	
	1.5			1.5
		1.2		
1.2		1.1		1
				47%

30%



1

42.5

16.1

53.1

2.2

			(%)	(%)	(%)	%
	4,732,597,099.11	4,163,391,634.76	12.03	18.60	21.18	1.88
	554,174,590.89	515,469,758.43	6.98	12.08	17.86	4.56
	2,106,016,978.13	1,862,014,389.24	11.59	16.51	19.35	2.11
	1,237,696,445.98	1,075,212,646.18	13.13	22.68	26.85	2.86
	1,388,883,675.00	1,226,164,599.34	11.72	18.31	19.28	0.72
	554,174,590.89	515,469,758.43	6.98	12.08	17.86	4.56

3

	315,264,904.12	19.11
	749,835,908.44	63.63
	2,198,404,109.96	16.60
	633,506,887.57	-17.29
	251,195,291.07	36.93
	412,624,845.90	4.03
	451,189,608.31	67.83
	274,750,134.63	4.98

4

10%

	2,106,016,978.13	1,862,014,389.24	11.59%
	1,237,696,445.98	1,075,212,646.18	13.13%
	1,388,883,675.00	1,226,164,599.34	11.72%
	554,174,590.89	515,469,758.43	6.98%

5

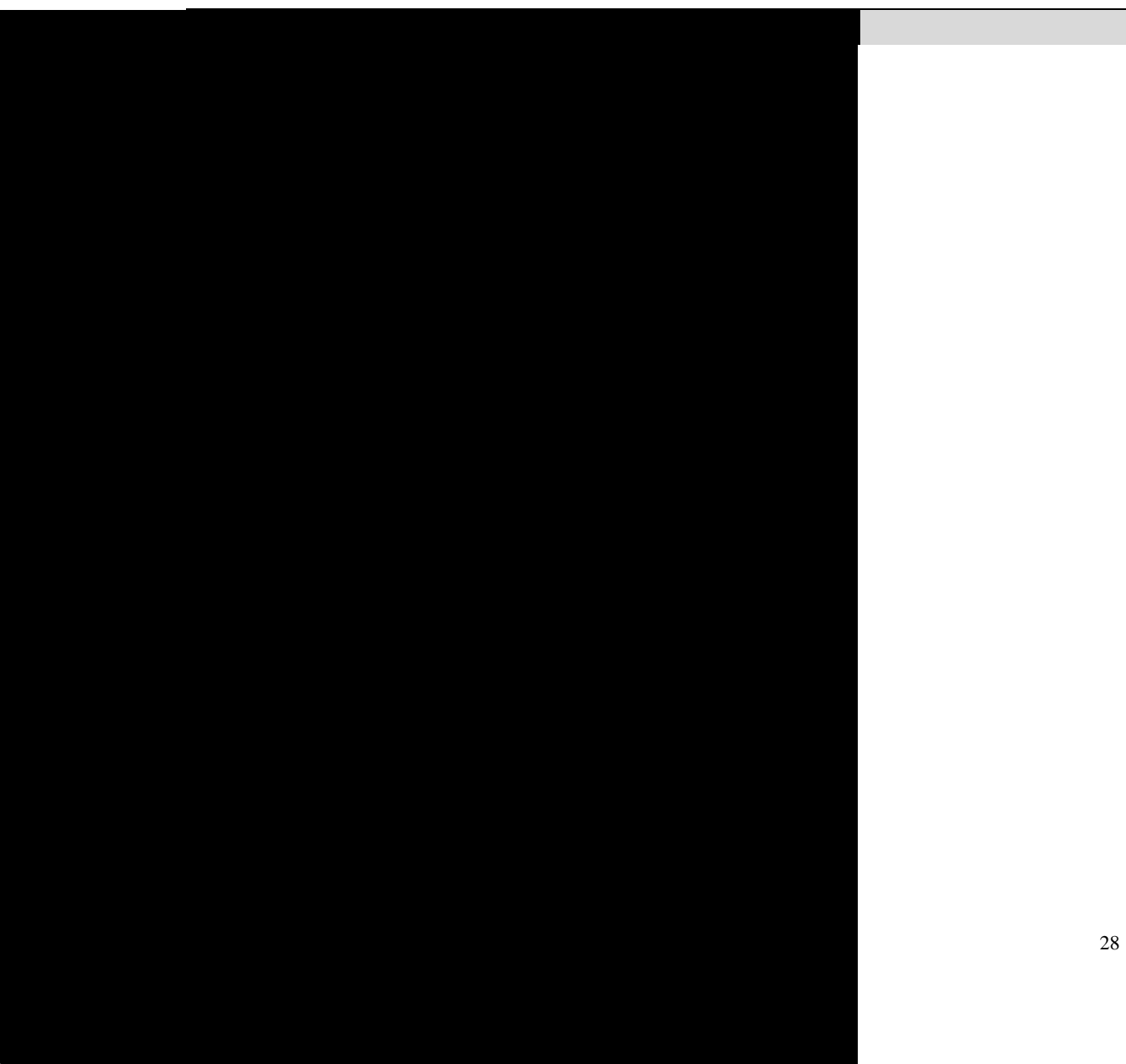
6

7

8

	548,261,767.15	%	12.40
	702,715,214.72	%	13.23

9



	35,827,635.61	61,183,076.17	-41.44	
	36,136,870.69	21,659,730.87	66.84	
	29,082,329.95	58,953,353.88	-50.67	
	-3,773,448.17	3,864,404.13	-197.65	

	22,751,061.34	6,416,411.96	254.58	
	122,392,343.28	36,219,854.91	237.92	
	0	51,599,440.00	-100	
	53,877,304.49	0	100	

	12,822,136.15	1,584,528.29	709.21	
	86,479,539.20	191,091,274.02	-54.74	
	0	8,876,660.00	-100	
	0	339,525,017.93	-100	
	842,017,934.02	1,702,676,951.11	-50.55	
	13,126,646.00	0	100	
	932,432,628.87	1,989,067,193.00	-53.12	
	42,897,356.61	101,205,545.74	-57.61	
	0	13,126,646.00	-100	

			5000	2,003,409,860.98	661,215,153.43	116,115,340.14
			900	522,578,649.16	206,771,233.36	73,685,760.98
			550	170,122,273.60	77,933,846.41	2,006,260.61
			2500	796,810,527.61	344,258,626.74	61,900,564.29
			5000	315,586,361.56	24,942,431.49	-19,880,535.76
			8000	152,188,776.55	73,523,761.50	-4,958,222.83
			1500	23,076,815.07	13,860,624.90	1,630,100.34
			2910	28,016,805.28	27,950,994.08	-674,664.48
			5000	43,783,436.95	42,269,711.36	-2,039,200.25
			500	10,152,619.26	4,868,257.93	-131742.07

2

10%

	2,712,087,529.51	135,147,110.50	116,115,340.14
	695,055,048.31	63,581,584.68	61,900,564.29
	1,005,716,147.82	82,696,900.07	73,685,760.98

1

50%

20%

2%

2

2009

145

3

4

2011

65

2010

22%

5

6

1

2

3

2011

4

5

6

7

	5,400
	-31,305.17
	36,705.17
(%)	-85.29

		(%)	
		100.00	

		100.00	

1

2

: :

	500.00		
	4,900.00		
	5,400.00	/	/

1

	2010 3 8			2010 3 10
2010	2010 4 27			2010 4 28
2010	2010 7 14			2010 7 16
2010	2010 7 26			2010 7 28
2010	2010 8 9			2010 8 10

2010	2010 9 3		2010 9 4
2010	2010 10 21		2010 10 22

2010 H1 5

2010 10 21 13.767 0.867 Td520102 19Tf 13.767 0.867 Td520102 19Tf 13.767 0.867 Td52010 È R)P B r

8,

2010

3

2 1

1
2010

2010

2010

6

2

2010

2010

2011 1 4

2010

2010

2011 1 25

2010

2010

2011 3 6

2010

2010

2010

2011

4

4

2

1

2010

4

5

6

7

2010

86,127,916.24

8,612,791.62 110,656,449.90 2009

11,610,000.00 176,561,574.52 2010

2010 10 0.5

19,350,000.00

2010 2010 12 31

556,329,951.86 2010 2010

10 5 19,350

362,829,951.86

			(%)
2007	6,900,000.00	99,885,667.38	6.91
2008	24,150,000.00	125,343,902.89	19.27
2009	11,610,000.00	192,200,582.02	6.04

2010

1

: :

										(%)	
	100%	2010 12 20	500	0	0					0	

500 2010 12 20

100%

2

: :

										(%)	
	55% 45%	2010 11 24	13,045.96	1,182.22	859.56					3.85	
	45% 55%	2010 11 24	8,984.04	-911.50	430.36					1.93	

1 2010 11 8 2010

2 2010 11 24 2010

3 2010 11 25

4 13,045.96 2010 11 24 100% 55%

5 8,984.04 2010 11 24 100% 55%

		11,000,000		
		0		
		0		
		11,000,000		
		0		
		10.15 /		
		40	0	40
		40	0	40
		35	0	35
		20	0	20
		20	0	20
		20	0	20
		20	0	20
		15	0	15
		15	0	15

	1	X=10.15		
	2	r	2010	
				4
		3		
		1		2.6%
		2		3.1%
		3		3.73%
		3	2010	7 26
		30		14.68%
			2010	
	2,566,700.00			

1

10

10

1

2

3

2

: :

				()									
			2,000	2009 10 13	2010 4 9	2011 3 31							
			17,660	2009 3 25	2009 5 12	2011 6 30							

2010

	30,500
A	19,660
	168,500
B	14,742
A+B	34,402
(%)	21.43
C	19,660
70 D	9,242
50 E	0
C+D+E	28,902

2010 11 24 2010

2011 3 31

2011 6 30

3

4

1

5%

: :

		90
		3

2009		2010 1 21	www.sse.com.cn
2010		2010 3 10	www.sse.com.cn
		2010 3 10	www.sse.com.cn
		2010 3 10	www.sse.com.cn
2010		2010 3 10	www.sse.com.cn
		2010 3 10	www.sse.com.cn
		2010 3 10	www.sse.com.cn
2010		2010 3 10	www.sse.com.cn
		2010 3 10	www.sse.com.cn
2009		2010 3 10	www.sse.com.cn

2009		2010 3 10	www.sse.com.cn
		2010 3 16	www.sse.com.cn
2010		2010 4 28	www.sse.com.cn
		2010 4 28	www.sse.com.cn
2009		2010 4 28	www.sse.com.cn
2010		2010 4 28	www.sse.com.cn
2009		2010 5 18	www.sse.com.cn
2009		2010 5 25	www.sse.com.cn
2009		2010 5 25	www.sse.com.cn
		2010 6 2	www.sse.com.cn
		2010 6 9	www.sse.com.cn
		2010 6 19	www.sse.com.cn

2009		2010 6 23	www.sse.com.cn
		2010 7 2	www.sse.com.cn
		2010 7 16	www.sse.com.cn
2010		2010 7 16	www.sse.com.cn
		2010 7 16	www.sse.com.cn
		2010 7 28	www.sse.com.cn
2010		2010 7 28	www.sse.com.cn
2010		2010 8 10	www.sse.com.cn
		2010 8 10	www.sse.com.cn
		2010 8 28	www.sse.com.cn
2010		2010 8 28	www.sse.com.cn
2010		2010 8 28	www.sse.com.cn

2010		2010 9 4	www.sse.com.cn
2010		2010 9 4	www.sse.com.cn
2010		2010 9 11	www.sse.com.cn
		2010 9 15	www.sse.com.cn
2010		2010 9 21	www.sse.com.cn
2010		2010 9 21	www.sse.com.cn
2010		2010 9 21	www.sse.com.cn
		2010 10 22	www.sse.com.cn
		2010 10 22	www.sse.com.cn
		2010 10 22	www.sse.com.cn
		2010 11 5	www.sse.com.cn
		2010 11 9	www.sse.com.cn

		2010 11 9	www.sse.com.cn
2010		2010 11 9	www.sse.com.cn
2010		2010 11 9	www.sse.com.cn
2010		2010 11 17	www.sse.com.cn
		2010 11 18	www.sse.com.cn
		2010 11 20	www.sse.com.cn
2010		2010 11 20	www.sse.com.cn
2010		2010 11 20	www.sse.com.cn
2010		2010 11 20	www.sse.com.cn
2010		2010 11 25	www.sse.com.cn
2010		2010 11 25	www.sse.com.cn
2010		2010 11 26	www.sse.com.cn

2010

2010		2010 11 26	www.sse.com.cn
2010		2010 12 7	www.sse.com.cn
2010		2010 12 7	www.sse.com.cn
2010		2010 12 14	www.sse.com.cn
		2010 12 22	www.sse.com.cn
2010		2010 12 22	www.sse.com.cn
		2010 12 22	www.sse.com.cn

2010

2010 12 31

.

O

2010 12 31

		80,648,700.72	38,132,139.80
		140,132.17	770,000.00
	()	106,632,498.48	84,982,646.13
		8,861,140.73	63,897,900.29
	()	123,347,980.51	11,276,681.01
		228,132,775.56	196,742,666.95
		547,763,228.17	395,802,034.18
	()	1,004,085,843.53	1,045,341,962.73
		9,127,656.24	
		107,690,574.39	123,140,700.70
		27,955,893.44	24,477,360.18
		12,043,494.39	12,319,438.91
		123,604.81	245,643.61
		2,651,094.01	2,422,415.86
		1,163,678,160.81	1,207,947,521.99
		1,711,441,388.98	1,603,749,556.17

2010 12 31

		215,000,000.00	140,000,000.00
		111,352,059.20	5,800,000.00
		157,438,505.20	172,658,408.83
		35,167,250.65	8,300,418.83
		4,440,911.11	3,876,298.41
		6,680,423.46	7,930,849.69
		302,659.06	201,598.25
		16,214,826.15	199,836,428.40
		546,596,634.83	538,604,002.41
		1,963,635.00	2,290,908.00
		1,963,635.00	2,290,908.00
		548,560,269.83	540,894,910.41
		387,000,000.00	387,000,000.00
		556,329,951.86	532,255,124.48
		42,989,592.77	32,943,071.38
		176,561,574.52	110,656,449.90
		1,162,881,119.15	1,062,854,645.76
		1,711,441,388.98	1,603,749,556.17

2010 12 31

	()	467,877,235.18	579,376,951.11
	()	348,621,044.48	379,720,608.00
	()	1,040,029,636.80	994,997,223.19
	()	545,811,206.79	489,605,929.87
	()	36,849,244.46	36,098,487.88
	()	102,584,326.14	72,620,903.68
	()	672,742.21	1,202,256.96
	()	0.00	381,016.36
	()	80,114,555.33	80,336,880.36
		2,622,559,991.39	2,634,340,257.41
	()	8,375,929.08	202,290,908.00
		8,375,929.08	202,290,908.00
		2,630,935,920.47	2,836,631,165.41
	()	387,000,000.00	387,000,000.00
	()	558,035,770.09	530,815,926.93
	()		
	()	66,558,949.15	57,946,157.53
	()	597,283,762.08	394,367,547.04
		-3,552,430.65	-3,000,578.13
		1,605,326,050.67	1,367,129,053.37

2010

	()	508,163,627.24	575,716,616.52
	()	467,564,482.94	513,550,883.21
		3,952,343.65	4,459,566.56
		(5,852,137.93	4,957,781.83

2010

2010

		5,313,048,737.74	4,509,837,470.39
	()	5,313,048,737.74	4,509,837,470.39
		4	

2010

	447,553,918.30	618,086,260.57
	-	821,893.73
	10,252,189.95	154,820,983.14
	457,806,108.25	773,729,137.44
	353,993,258.92	542,323,472.45
	35,281,243.40	31,704,888.96
	12,423,523.89	15,341,926.46
	207,944,730.21	126,019,115.30
	609,642,756.42	715,389,403.17
	-151,836,648.17	58,339,734.27
		51,599,440.00
	92,061,677.18	66,558,970.46
	206,381.54	447,341.10
	121,165,000.00	

2010

		4,948,639,654.09	4,158,781,405.58

2010

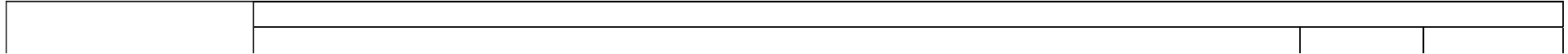
	()							
	387,000,000.00	532,255,124.48			32,943,071.38		110,656,449.90	1,062,854,645.76
	387,000,000.00	532,255,124.48			32,943,071.38		110,656,449.90	1,062,854,645.76
“-”		24,074,827.38			10,046,521.39		65,905,124.62	100,026,473.39
							86,127,916.24	86,127,916.24
							86,127,916.24	86,127,916.24
		24,074,827.38			1,433,729.77			25,508,557.15
1								
2		2,566,700.00						2,566,700.00
3		21,508,127.38			1,433,729.77			22,941,857.15
					8,612,791.62		-20,222,791.62	-11,610,000.00

2010

	(
)									
	387,000,000.00	530,815,926.93			57,946,157.53	394,367,547.04	-3,000,578.13	16,296,994.49	1,383,426,047.86	
	387,000,000.00	530,815,926.93			57,946,157.53	394,367,547.04	-3,000,578.13	16,296,994.49	1,383,426,047.86	
“_”		27,219,843.16			8,612,791.62	202,916,215.04	-551,852.52	-3,953,625.48	234,243,371.82	
						223,139,006.66		-3,773,448.17	219,365,558.49	
									0	
						223,139,006.66		-3,773,448.17	219,365,558.49	
		27,219,843.16					-551,852.52		26,667,990.64	
1										
2		2,566,700.00							2,566,700.00	
3		24,653,143.16					-551,852.52		24,101,290.64	
					8,612,791.62	-20,222,791.62		-180,177.31	-11,790,177.31	
1					8,612,791.62	-8,612,791.62				
2										
3										

2010

2010



(

O O

“ ” “ ”

1999 11

340000000022295

2002 2 7 [2002]22 2002 5

22 4,000.00

11,000 11,000.00

2004 “ ”

6,288.1218 57.165%

4,000 36.364% 678.8832

6.172% 32.995 ,
0.299%

2005 11 920

2005 2005

12 31 11,000 10 5

5,500 16,500

2006

2006 68

6,500

23,000

2008	5	20	2007
23,000			
34,500			
2009			
[2009]1079			
			4,200
		38,700	
2010	12	31	38,700
38,700.00			

2010 12 31

“ ”

“ ”

“ ”

“ ”

“ ”

“ ”,

“ ”

“ ”

“ ”

“ ”

“ ”

SINGAPORE JINGGONG STEEL STRUCTURE PTE .LTD.

“

”

“ ”

Purple Cayman,Limited

“ ”

“ ”

American Buildings Company Asia L.P.

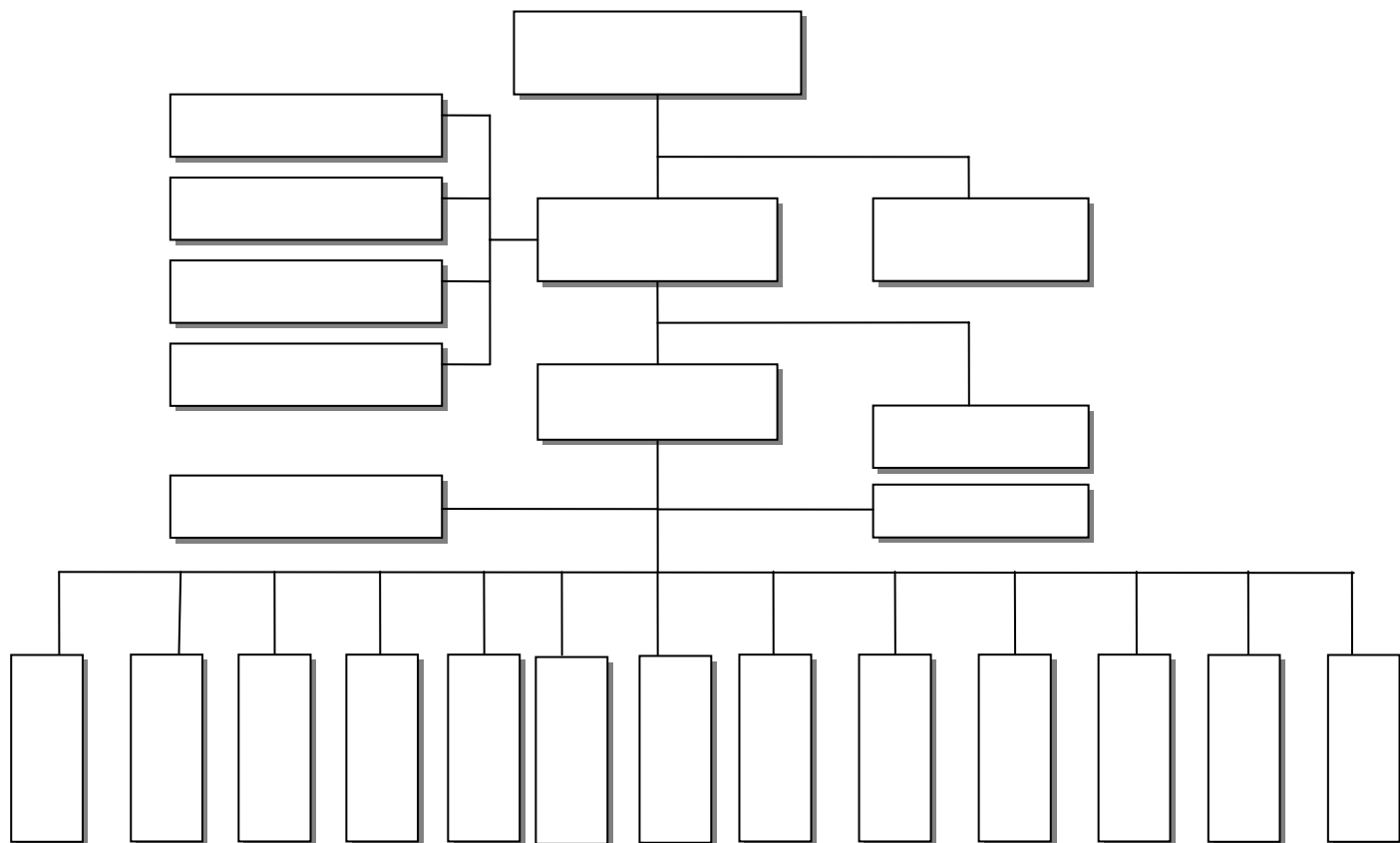
“ ”

“ ”

“ ”

“ ”

“ ”



()

—

()

()

1 1 12 31

()

()

1

2

()

()

()

1

2

“ ”

()

1

2

1

2

3

4

5

3

1

2

1

2

4

5

6

1

2

()

1

2,000

100

2

1	
2	
3	
1	
2	

		(%)	(%)
1	1	5.00	5.00
1	2	10.00	10.00
2	3	30.00	30.00
3	4	50.00	50.00
4	5	80.00	80.00
5		100.00	100.00

3

:

:

()

1

2

3

4

()

1

1

2

2

1

2

3

4

()

()

1

1

2

2

		%	%
	20-30	3-10	3.00-4.85
	8-12	3-10	7.50-12.15
	3-10	3-10	9.00-32.33
	5-10	3-10	9.00-19.40

3

()

1

2

3

()

1

1

2

3

2

3

3

4

()

1

1

2

2

		50
		5

3

4

5

1

2

3

4

5

()

()

1

2

Black-Scholes

3

()

1

2

1

2

3

1

2

()

1

2

()

1

2

()

1

2

()

1

2

()

()

			%
			17.00
		3.00	5.00
		3.00	7.00
		12.50	15.00 25.00
		3.00	4.00

[2002]117

17%

3%

5%

()

1

[2008]172

[2008]362

GR200834000354

2008-2010

15%

2

[2008]172

[2008]362

[2008]250

3 [2008]172
[2008]362
GR200834000598
2008-2010 15%

4 2007 3
26.40%
“ ” 2008 25% 2010
12.5%

5 2007 8
“ ” 2010
12.5%

6 [2008]172
[2008]362
GR200931000364
2009-2011 15%

()

1

							(%)	(%)				
				900		900	100.00 ()	100.00 ()				
				550		550	100.00 ()	100.00 ()				
				2,500		2,500	100.00	100.00				
				8,000		8,000	100.00	100.00				
				50		50	100.00	100.00				
				10			100.00	100.00				
25	2010	12	31		100	75	40%	25%				

2

							(%)	(%)				
			5,000		5,000		99.68 1	99.68 1		2,117,097.18		
			1,500		1,500		100.00	100.00				
			5000		5,000		100.00	100.00				
			2,910		2,910		100.00	100.00				
			500		500		100.00 2	100.00 2				

1 2010 12 31
99.68
2

95.68

4

100.00%

2010 12 31

100.00

3

							(%)	(%)			
			500		500		85.00	85.00			
					1		70.00	70.00			
			5,000		5,000		80.00	80.00	10,226,271.83		
		Cayman. Island.B.W.I	1,050		1,050		100.00	100.00			
		Cayman. Island.B.W.I	1,500		1,500		100.00	100.00			
			1,100		1,100		100.00	100.00			
			1		1		100.00	100.00			
			1		1		100.00	100.00			

2010 12 31

25

75

85

()

()

1		2	100%
2	2		
		55% 55%	2010
12	31		
	45% 45%		

()

1		
	4,868,257.93	-131,742.07
	-215,984.72	-215,984.72

()

()

	282,427,793.92	1.0000	282,427,793.92	157,892,208.77	1.0000	157,892,208.77
	611,270.57	6.6227	4,048,261.60	286,431.93	6.8282	1,955,814.50
	2,705,496.84	0.8265	2,236,093.14	1,038,899.98	0.8555	888,778.93
	2,893,424.49	5.1191	14,811,729.31	546,096.16	4.8605	2,654,300.39
			303,523,877.97			163,391,102.59
	209,833,278.55	1.0000	209,833,278.55	432,468,898.56		432,468,898.56
			209,833,278.55			432,468,898.56
			514,075,267.85			596,366,368.52

	129,081,750.21	253,940,748.24
	391,056.37	2,343,110.67
	40,000,000.00	86,704,823.76
	77,951,134.83	88,977,631.15
	2,409,337.14	1,405,600.84
	249,833,278.55	433,371,914.66

()

1

	35,519,172.17	47,467,297.03
	3,645,866.90	4,168,000.00
	39,165,039.07	51,635,297.03

2**3**

4 2010 12 31

347,061,247.55

	2010.11.30	2011.5.12	5,000,000.00	
	2010.11.30	2011.5.12	5,000,000.00	
	2010.12.16	2011.06.15	2,004,000.00	
	2010.7.22	2011.1.22	2,000,000.00	
	2010.7.22	2011.1.22	2,000,000.00	

5

()

1

		%		%		%		%
1	932,395,675.75	98.89	171,850,866.37	18.43	1,064,036,636.78	99.83	161,477,034.04	15.180
	932,395,675.75	98.89	171,850,866.37	18.43	1,064,036,636.78	99.83	161,477,034.04	15.180
	10,464,102.16	1.11	10,464,102.16	100.00	1,820,349.21	0.17	1,820,349.21	100.00
	942,859,777.91	100.00	182,314,968.53	19.34	1,065,856,985.99	100.00	163,297,383.25	15.32

		%			%	
1	508,515,425.96	54.54	25,425,771.28	672,370,715.18	63.19	33,689,432.30
1 2	163,869,182.64	17.58	16,386,918.28	168,107,154.75	15.80	16,833,936.52
2 3	115,177,856.76	12.35	34,553,357.04	137,132,365.38	12.89	41,139,709.62
3 4	93,297,477.19	10.00	46,648,738.61	24,242,370.84	2.28	12,121,185.43
4 5	13,498,260.17	1.45	10,798,608.14	22,456,302.28	2.11	17,965,041.82
5	38,037,473.03	4.08	38,037,473.02	39,727,728.35	3.73	39,727,728.35
	932,395,675.75	100.00	171,850,866.37	1,064,036,636.78	100.00	161,477,034.04

		6,692,330.00	6,692,330.00	100%
Abdul Rahman Saad A2-Rashid & Sons Company Ltd.		3,771,772.16	3,771,772.16	100%
		10,464,102.16	10,464,102.16	

2

			1,820,349.21	1,820,349.21
		5	2,600,000.00	2,600,000.00
		5	750,000.00	750,000.00
		5	262,284.70	262,284.70
			5,432,633.91	5,432,633.91

3

			689,771.00	
()			41,300.00	

2

			12,282,264.85	1	
			6,239,883.70	1	
			5,593,549.77	1	
			6,070,750.39	1	
			4,521,727.15	1	
			34,708,175.86		

3

5

5

4

“

”

5

	54,739.02	5.1191	280,214.52	3,714.62	4.7530	17,655.59
			280,214.52			17,655.59

()

1

		%		%		%	%	
1	156,997,474.42	99.36	23,410,950.87	14.19	127,095,790.75	99.21	18,165,733.18	5-100
	156,997,474.42	99.36	23,410,950.87	14.91	127,095,790.75	99.21	18,165,733.18	5-100
	1,017,482.23	0.64	1,017,482.23	100.00	1,017,482.23	0.79	1,017,482.23	
	158,014,956.65	100.00	24,428,433.10	15.46	128,113,272.98	100.00	19,183,215.41	

		%			%	
1	90,050,442.92	57.36	4,492,517.16	69,311,260.28	54.53	3,603,515.18
1 2	33,875,639.23	21.58	3,387,563.92	38,208,604.05	30.06	3,813,224.48
2 3	20,115,552.36	12.81	6,034,665.72	9,842,737.41	7.74	2,918,066.21
3 4	5,988,423.86	3.81	2,994,211.94	3,505,455.54	2.76	1,752,727.78
4 5	2,327,119.59	1.48	1,861,695.67	747,669.68	0.59	598,135.74
5	4,640,296.46	2.96	4,640,296.46	5,480,063.79	4.31	5,480,063.79
	156,997,474.42	100.00	23,410,950.87			

		5,235,587.70	1	3.31
		5,194,759.42	1-2	3.29
		3,500,000.00	1	2.21
		3,090,000.00	1	1.96

6

“

”

7

8

1

	249,081,920.08	2,146,633.07	246,935,287.01	255,915,311.62	2,072,696.16	253,842,615.46
	772,180.42		772,180.42	1,362,628.21		1,362,628.21
	8,024,551.56	607,598.69	7,416,952.87	9,615,221.72	685,383.47	8,929,838.25
	101,327,082.29	755,505.00	100,571,577.29	114,701,664.03	1,930,189.08	112,771,474.95
	270,325,301.73	1,254,097.37	269,071,204.36	216,489,217.53	1,767,021.55	214,722,195.98
(1,075,346,377.18	266,689.43	1,075,079,687.75	695,532,268.83	2,285,246.94	693,247,021.89
)						
	1,704,877,413.26	5,030,523.56	1,699,846,889.70	1,293,616,311.94	8,740,537.20	1,284,875,774.74

2

	2,072,696.16	73,936.91		2,146,633.07
	685,383.47		77,784.78	607,598.69
	1,930,189.08		1,174,684.08	755,505.00
	1,767,021.55		512,924.18	1,254,097.37
(2,285,246.94		2,018,557.51	266,689.43
)				
	8,740,537.20	73,936.91	3,783,950.55	5,030,523.56

3

()			

4

()

					(%)	(%)						
					2,000.00	49.00	49.00	3,430.55	1,086.16	2,344.39	12,979.31	204.47
					800	45.00	45.00	33,588.86	23,724.07	9,864.79	67,590.86	1,671.22
					10,000	45.00	45.00	35,032.10	26,373.41	8,658.69	19,058.07	-919.40

()

						(%)	(%)				
	9,800,000.00	10,977,073.53	1,001,879.99	11,978,953.52		49.00	49.00				
	37,051,532.59		57,258,176.94	57,258,176.94		45.00	45.00				9,558,828.41
	44,696,735.52		41,289,765.90	41,289,765.90		45.00	45.00				
	91,548,268.11	10,977,073.53	99,549,822.83	110,526,896.36							
	8,300,000.00	8,300,000.00		8,300,000.00		8.33	8.33				
	8,300,000.00	8,300,000.00		8,300,000.00							
	99,848,268.11	19,277,073.53	99,549,822.83	118,826,896.36							9,558,828.41

()

1	39,473,322.48	18,759,879.48		58,233,201.96
	39,473,322.48	18,759,879.48		58,233,201.96
2	3,973,338.21	3,708,699.31		7,682,037.52
	3,973,338.21	3,708,699.31		7,682,037.52
3	35,499,984.27	15,051,180.17		50,551,164.44
	35,499,984.27	15,051,180.17		50,551,164.44
4				
5	35,499,984.27	15,051,180.17		50,551,164.44
	35,499,984.27	15,051,180.17		50,551,164.44

2,172,758.29

()

1

	1,119,600,356.66	63,569,004.94	278,457,020.38	904,712,341.22
	569,141,204.01	16,596,853.92	86,279,132.91	499,458,925.02
	489,835,692.22	39,594,228.42	178,457,020.38	904,712,341.22

	754,673,815.88	-3,181,560.73	171,520,954.05	579,971,301.10
	462,930,627.00	-7,141,602.93	65,605,563.30	390,183,460.77
	261,242,360.64	4,184,474.66	103,033,832.89	162,393,002.41
	11,710,124.15	24,719.31	11,900.38	11,722,943.08
	18,790,704.09	-249,151.77	2,869,657.48	15,671,894.84

66,750,565.67

2,256,104.29

2

3

4

5

6

	21,509,337.16		2011
	9,918,718.64		2011
	7,647,840.51		2011

7

	218,299,457.45	51,805,262.09	166,494,195.36
	218,299,457.45	51,805,262.09	166,494,195.36

“ ”

()

1

				78,738,221.50	78,738,221.50
				36,622,359.34	36,622,359.34
	1,373,482.49	1,373,482.49	665,122.37	665,122.37	
SAP-ERP	11,578,066.50	11,578,066.50	10,833,425.61	10,833,425.61	
	16,377,826.94	16,377,826.94	13,418,882.89	13,418,882.89	
	276,705.23	276,705.23	114,408.00	114,408.00	
			266,053.60	266,053.60	
			131,955.35	131,955.35	
			99,988.56	99,988.56	
	22,456,809.30	22,456,809.30			
	10,552,040.22	10,552,040.22			
3#	2,999,859.00	2,999,859.00			
	2,858,223.64	2,858,223.64			
	40,000.00	40,000.00			
	68,513,013.32	68,513,013.32	140,890,417.22	140,890,417.22	

2

		22,456,809.30			1			(%)	22,456,809.30
		10,552,040.22			2				10,552,040.22
	13,418,882.89	2,958,944.05			3				16,377,826.94
SAP-ERP	10,833,425.61	744,640.89			4				11,578,066.50
	24,252,308.50	36,712,434.46							60,964,742.96

1

2

3

4

2,256,104.29

()

1	213,393,743.11		56,914,134.37	156,479,608.74
(1).	212,954,283.11		56,597,414.37	156,356,868.74
(2). /	439,460.00		316,720.00	122,740.00
2	14,008,075.52	4,527,157.22	3,545,707.80	14,989,524.94
(1).	13,676,663.15	4,501,009.64	3,228,987.80	14,948,684.99
(2). /	331,412.37	26,147.58	316,720.00	40,839.95
3	199,385,667.59		57,895,583.79	141,490,083.80
(1).	199,277,619.96		57,869,436.21	141,408,183.75
(2). /	108,047.63		26,147.58	81,900.05
4				
(1).				
(2). /				
5	199,385,667.59		57,895,583.79	141,490,083.80
(1).	199,277,619.96		57,869,436.21	141,408,183.75
(2). /	108,047.63		26,147.58	81,900.05

4,527,157.22

113,359,884.93

“

”

()

	2,923,049.70		2,923,049.70	
	845,736.86		845,736.86	
	3,768,786.56		3,768,786.56	

()

	2,248,894.80		1,230,038.51	70,184.81	948,671.48
	27,566.70		12,634.82	14,931.88	
	2,276,461.50		1,242,673.33	85,116.69	948,671.48

()

1

	306,884.74	320,872.38
	109,204.96	2,153,453.78
	29,411,593.08	28,532,269.49
		500,333.30
		2,299,890.88
	1,093,542.60	706,928.86
	30,921,225.38	34,513,748.69

2

	206,743,401.63
	5,030,523.56
	2,045,898.27
	728,033.07
	7,290,284.02
	221,838,140.55

()

2010



1		
1	822,328,953.51	867,181,731.33
1-2	155,657,042.72	103,081,423.68
2-3	44,384,894.67	17,490,385.31
3	17,658,745.90	7,243,682.87
	1,040,029,636.80	994,997,223.19

2	5	5
3	“	”
4	56,170,966.59	

()

1		
1	529,619,865.15	469,036,696.03
1-2	1,721,095.67	18,736,790.35
2-3	13,896,259.26	414,482.90
3	573,986.71	1,417,960.59
	545,811,206.79	489,605,929.87

2	5	5
3	“	”
4	1	13,836,101.00

()

1	18,766,501.82	224,856,277.29	220,402,498.12	23,220,280.99
2	566.93	11,929,635.14	11,929,650.07	552.00
3	6,471,142.09	20,985,428.49	24,894,606.00	2,561,964.58
	390,114.57	6,615,156.45	6,649,294.90	355,976.12
	5,430,626.55	11,327,556.00	14,804,133.90	1,954,048.65
	221,593.90	1,188,835.70	1,319,369.80	91,059.80
	393,067.12	1,417,745.49	1,674,347.32	136,465.29
	35,739.95	436,134.85	447,460.08	24,414.72
4	396,924.81	2,146,790.71	2,329,409.15	214,306.37
5	10,463,352.23	6,504,164.17	6,115,375.88	10,852,140.52
6		44,211.71	44,211.71	
	36,098,487.88	266,466,507.51	265,715,750.93	36,849,244.46

55%

1,633,110.49

()

	26,821,449.59	11,121,885.63
	36,201,089.99	32,917,114.06
	809,510.01	51,119.20
	33,036,119.40	22,897,386.67
	-3,062,192.74	-2,272,382.61
	495,559.87	6,800.39
	256,630.69	396,833.53
	1,256,672.47	429,729.19
	670,700.65	613,059.26
	3,712,898.42	3,624,881.20
	2,379,414.04	2,830,332.62
	6,473.75	4,144.54
	102,584,326.14	72,620,903.68

“ ”

()

	672,742.21	1,202,256.96
	672,742.21	1,202,256.96

()

		207,000.00
		174,016.36
		381,016.36

()

1

1	43,369,400.66	49,837,350.20
1-2	16,023,447.94	18,987,507.13
2-3	11,966,121.61	3,987,064.52
3	8,755,585.12	7,524,958.51
	80,114,555.33	80,336,880.36

2**5****5**

		82,299.62

	3,531,700.19		

()

1

	6,412,294.08	200,000,000.00
	1,963,635.00	2,290,908.00
	8,375,929.08	202,290,908.00

2

				%			
	2010.6.2	2020.6.1		5.94	6,412,294.08		
	2001.7.31	2015.8.6		2.55	1,963,635.00		2,290,908.00
					8,375,929.08		2,290,908.00

()

		+				
1						
(1).						
(2).						
(3).	42,000,000.00			-42,000,000.00	-42,000,000.00	
	32,000,000.00			-32,000,000.00	-32,000,000.00	
	10,000,000.00			-10,000,000.00	-10,000,000.00	
(4).						
	42,000,000.00			-42,000,000.00	-42,000,000.00	
2						
(1).	345,000,000.00			42,000,000.00	42,000,000.00	387,000,000.00
(2).						
(3).						
(4).						
	387,000,000.00					387,000,000.00

2009 11 9

[2009]1079

4,200

1 2010 11 10

()

1.	528,660,506.96	27,219,843.16	555,880,350.12
2.	2,155,419.97		2,155,419.97
	530,815,926.93	27,219,843.16	558,035,770.09

1 2010

2,566,700.00

2,566,700.00

2

55%

2010

11

30

24,835,943.16

100%

75%

25%

55%

07

100%

21,148,748.39

55%

21,148,748.39

()

	57,946,157.53	8,612,791.62	66,558,949.15
	57,946,157.53	8,612,791.62	66,558,949.15

10

()

		394,367,547.04	
	+	-	
		394,367,547.04	
		223,139,006.66	
		8,612,791.62	10
		11,610,000.00	
		597,283,762.08	

2010 5 22

10

0.3 ()

11,610,000.00

()

		15,381,802.13	15,381,802.13
		15,381,802.13	15,381,802.13

2%

2009

14,263,734.54

19,001,857.59

()

1

	5,313,048,737.74	4,509,837,470.39
	5,286,771,690.00	4,484,959,961.66
	26,277,047.74	24,877,508.73
	4,681,362,518.82	3,879,524,719.29

2

	4,732,597,099.11	4,163,391,634.76	3,990,536,405.36	3,435,680,473.51
	554,174,590.89	515,469,758.43	494,423,556.30	437,357,144.98
	5,286,771,690.00	4,678,861,393.19	4,484,959,961.66	3,873,037,618.49

3

	4,732,597,099.11	4,163,391,634.76	3,990,536,405.36	3,435,680,473.51
	554,174,590.89	515,469,758.43	494,423,556.30	437,357,144.98
	5,286,771,690.00	4,678,861,393.19	4,484,959,961.66	3,873,037,618.49

4

	5,012,021,555.37	4,438,702,774.29	4,223,252,172.90	3,673,650,099.34
	274,750,134.63	240,158,618.90	261,707,788.76	199,387,519.15



()

	47,292,043.41	39,072,651.16
	2,344,013.42	1,305,116.27
	2,679,656.50	1,959,444.55
	3,535,220.24	2,090,701.14
	373,822.59	430,672.70
	56,224,756.16	44,858,585.82

()

	25,145,501.43	15,410,391.97
	22,217,003.43	32,914,180.05
	11,303,013.19	8,447,908.86
	10,247,632.33	10,752,624.70
	1,973,426.41	1,566,499.79
	1,396,528.56	1,132,547.46
	1,009,089.62	244,954.57
	13,796,698.52	17,453,105.18
	87,088,893.49	87,922,212.58

()

	63,677,517.78	58,414,234.85
	17,432,540.02	16,673,213.90
	8,727,012.23	6,918,321.11
	8,212,031.56	7,259,686.69
	5,007,292.65	5,073,014.10
	2,566,700.00	
	83,153,189.86	84,728,020.52
	188,776,284.10	179,066,491.17

()

	34,739,730.84	65,623,227.14
	7,019,393.50	13,051,544.98
	2,094,993.95	2,432,515.41
	6,012,304.32	6,178,878.60
	35,827,635.61	61,183,076.17

()

	39,846,884.33	19,174,098.38
	-3,710,013.64	2,485,632.49
	36,136,870.69	21,659,730.87

()

1

	2,646,070.50	-1,113,361.71
	12,899,157.26	15,668,379.08
	15,545,227.76	14,555,017.37

2

	1,001,879.99	527,742.85
		-1,641,104.56
	1,679,711.51	
	-35,521.00	
	2,646,070.50	-1,113,361.71

()

1

1	835,067.59	1,260,116.63	835,067.59
	835,067.59	1,260,116.63	835,067.59
2	6,941,949.54	6,313,983.02	6,941,949.54
3	235,731.19	4,545.12	235,731.19
4	208,110.00	888,385.94	208,110.00
5	477,933.45	240,437.16	477,933.45
6	1,550,329.56	446,477.56	1,550,329.56
7	826,875.60	1,641,906.64	826,875.60
	11,075,996.93	10,795,852.07	11,075,996.93

()

1	1,482,668.44	1,051,081.29	1,482,668.44
	1,482,668.44	1,051,081.29	1,482,668.44
2		3,335,555.35	
3	1,263,000.00	312,000.00	1,263,000.00
5	2,370,000.00		2,370,000.00
6	689,446.68	1,256,547.26	689,446.68
	5,805,115.12	5,955,183.90	5,805,115.12

()

	32,766,182.45	51,874,836.06
	-3,683,852.50	7,078,517.82
	29,082,329.95	58,953,353.88

1

$$1 = P0 / (E0 \quad NP \div 2 \quad E_i \times M_i \div M0 - E_j \times M_j \div M0 \pm E_k \times M_k \div M0)$$

P0

NP

E0

Ei

Ej

M0

Mi

Mj

Ek

Mk

2

$$= P0 \div S$$

$$S = S0 \quad S1 \quad S_i \times M_i \div M0 - S_j \times M_j \div M0 - S_k$$

P0

S

S0

S1

Si

Sj

Sk

M0

Mi

Mj

3

$$= [P+$$

$$\times 1-$$

$$] / S0 \quad S1 \quad S_i \times M_i \div M0 \quad S_j \times M_j \div M0 \quad S_k +$$

P

S

S0

S1

Si

Sj

Sk

M0

Mi

Mj

2

	1	223,139,006.66
	2	206,908,784.66
	3	387,000,000.00
	4	
	5	
	6	
	7	
	8	
	9	12
	$10=3+5\times 6\div 9$	387,000,000.00
/	$11=1\div 10$	0.58
/	$12=2\div 10$	0.53

()

1.		
2.		
3.		
4.	-551,852.52	-5,160.77

	-551,852.52	-5,160.77
5.		
	-551,852.52	-5,160.77

()

1**122,392,343.28**

	45,471,555.98
	23,270,231.60
	12,540,209.90
	12,374,836.51
	7,019,393.50
	6,941,949.54
	3,986,008.44
	2,339,129.36
	1,145,000.00
	1,097,220.23

2**186,737,220.78**

	20,174,350.80
	19,393,554.16
	18,974,644.56
	18,897,528.42
	16,509,103.10
	9,326,652.00
	8,983,172.86

	7,148,217.29
	6,403,821.21
	5,991,935.10
	5,952,696.48
	2,477,351.13

()

1

1		
	219,365,558.49	196,064,986.15
	36,136,870.69	21,659,730.87
	68,923,323.96	66,061,305.97
	4,527,157.22	4,523,846.28
	1,242,673.33	1,526,094.73
“ ”	647,600.85	-209,035.34
“ ”		
“ ”		
“ ”	35,362,715.09	65,623,227.14
“ ”	-15,545,227.77	-14,555,017.37
“ ”	-3,683,852.50	7,078,517.82
“ ”		
“ ”	-540,934,449.24	-190,411,504.53
“ ”	-71,144,360.88	23,441,843.54
“ ”	379,322,153.18	10,829,533.76
	114,220,162.42	191,633,529.02
2		
3		

	374,083,237.97	397,357,465.40
	397,357,465.40	415,732,295.34
	-23,274,227.43	-18,374,829.94

55%

2

1	5,000,000.00	
2	5,000,000.00	
	329,542.51	
3	4,670,457.49	
4	4,868,257.93	
	9,378,753.52	
	22,782,310.31	
	27,292,805.90	
1	220,300,000.00	
2	121,165,000.00	
	67,287,695.51	
3	53,877,304.49	
4	180,423,730.20	
	401,553,356.59	
	301,250,220.42	
	322,379,846.81	
	200,000,000.00	

3

()

								(%)	(%)		
						32,000	33.75	1	33.75	2	74702069-1

1 7,739,289.00 (2%) 33.75%

2:

()

								(%)	(%)	
							900	75.00	75.00	76391743-1
							550	75.00	75.00	76253883-5
							2,500	100.00	100.00	
							8,000	100.00	100.00	79779326-2
							50	100.00	100.00	
							500	100.00	100.00	55752383-7
							5,000	95.68	95.68	71252825-X
							1,500	100.00	100.00	76477663-4
							5000	100.00	100.00	73540949-9

							(%)	(%)	
						500	85.00	85.00	78199019-X
						2,910	100.00	100.00	68880988-6
						5,000	80.00	80.00	75341661-7
			Cayman. Island.B. W.I			1,050	100.00	100.00	
			Cayman. Island.B. W.I			1,500	100.00	100.00	
						1,100	100.00	100.00	60728866-1
						1	100.00	100.00	
							70.00	70.00	
							100.00	100.00	
						1	100.00	100.00	

()

					(%)	(%)	()						
				2,000.00	49.00	49.00	3,430.55	1,086.16	2,344.39	12,979.31	204.47		76628136-0
				800	45.00	45.00	33,588.86	23,724.07	9,864.79	67,590.86	1,671.22		60966291-X
				10,000	45.00	45.00	35,032.10	26,373.41	8,658.69	19,058.07	-919.40		67758731-7

()

		76479600-2
		77736336-1
		73383573-4
		76132629-1
		79014449-7
		66075172-3
		77578947-3
		77021295-8
		74213917-5
		60966193-3
		76253376-X
		77075868-5
		71327080-1
		72362956-6
		73840053-7
		69829300-0
		60966291-X
		74702069-1
		71345193-X
		14606781-4

()

1

2

					%		%	
					180.14	0.04	484.42	0.14
					836.16	0.19	596.35	0.17
					271.13	0.06	307.05	0.09
					1,607.61	0.37	2,170.99	0.61
					1.37		54.70	0.02
							7.29	
					46.04	0.01		
					4.18	0.87		
					89.54	0.02		
					5.40	0.02		
					69.25	0.21		

1

118.17

19.31

42.66

2

817.25

18.91

3

271.13

4

1,607.61

5

1.37

6		46.04
7		4.18
8		86.18
	3.36	
9		5.40
10		69.25

3

				(%)	(%)
				1.76	0.00
				1,410.22	0.27
				1.72	0.00
				996.27	0.19
					118.71
				3.81	0.00
				3,385.19	0.64
				1,312.42	0.25
				423.12	0.08
				32.89	0.01
				0.10	0.00
				224.49	0.04
				2.20	0.00

4

			3,482.62	2010.1.1	2010.9.30	11.21	
			3,482.62	2010.1.1	2010.12.31	79.96	
			3,482.62	2010.1.1	2010.12.31	79.97	
			3,482.62	2010.1.1	2010.6.30	11.32	
					159		14.15.16
					2,574.76		

(2005) C.B:9057

8,000.00

2010 03 16 2011 03 15

6

1

14,820.19

1,307.63

1,226.33

2

100.00%

500.00

2010

12 31

3

75.00%

25.00%

13,045.96

2010 12 31

55%

20%

25%

100%

8,984.04

2010 12 31

55%

45%

4

492.00

7

		1.27	
			7.29
		1,307.63	499.40
		46.04	
		12.20	
		145.55	150.00
		8.21	10.29
		3.42	5.63
		2.39	
			8.23
			0.36
		1,226.33	763.00
			135.00

2010 12 31

			8,500.00
			28,964.10
			2,000.00
			17,660.00

55%

2000 2011 3 31
 17660 2011 6 30

()	10,005,686.99	8,490,665.59					
	03943	23,191,296.93	22,120,997.86				
		2008	6-9				
	800.00			2010	10	11	2011
9	8						
()	4,306,775.74	3,279,898.2					

()	15,799,813.76	14,137,204.22					
	457480	8,995,747.50	7,735,593.06				
		(2005) G.B:0181					
	3,500.00		2010 12 1	2011 12			
	1						
()	3,753,745.44	2,075,353.42					
	05878	5,372,424.56	3,015,485.99				
		05732	21,900,000				
	16,730,541.32		GF-1104) 015				
		1,600.00					
	2010 7 7	2011 1 6					
()	16,078,332.80	11,630,625.14					
	14602	21,900,000	16,730,541.32				
		GF-1104) 015					
	3,100.00		2010 10 29	2011			
	9 28						
()	51,203,164.16	27,513,447.11					
	(2002) 003783	(1999) 001643		(2002)			
	003784	(2002) 003785	(2002) 003786				
	(2002) 003787	(1999) 001644	(1999)				
	001645	(2004) 019386		3,800.00			
			2010 8 30	2011 2 28			
()	9,918,718.64	9,918,718.64					
	2010 6 2	2020 6 1 666					
	2010 12 31						
	6,412,294.08						
()	2500						
	2,711,587.25		2010 11 15	2011			
	5 12						

	201	3	8		2010	
				10	0.5	
19,350,000.00					2010	2010
					10	5
19,350.00					362,829,951.86	

()

1

		%		%		%		%
1	98,994,921.18	80.79	15,896,553.62	16.06	90,917,355.63	94.86	10,862,594.58	11.95
3	23,534,130.92	19.21		0	4,927,885.08	5.14		
	122,529,052.10	100.00	15,896,553.62	12.97	95,845,240.71	77.65	10,862,594.58	8.94

5						
	98,994,921.18	100.00	15,896,553.62	90,917,355.63	100.00	10,862,594.58

2

		22,645,045.09			
		395,310.57			
		493,775.26			
		23,534,130.92			

2

3

4

5

5

5

					(%)
			20,454,809.13	1	16.69
			15,843,991.83	1	12.93
			14,809,692.83	2-5	12.09
			10,531,000.00	1	8.59
			8,795,000.00	1	7.18

6

					(%)
--	--	--	--	--	-----

		3,083,337.80	2.52
		134,683.95	0.11

7

8

()

1

		%		%		%		%
1	12,888,627.53	10.30	1,777,406.45	13.79	12,088,777.07	92.59	1,779,678.12	14.72
3	112,236,759.43	89.70		0.00	967,582.06	7.41		0.00
	125,125,386.96	100.00	1,777,406.45	1.42	13,056,359.13	100.00	1,779,678.12	13.63

5		0				
	12,888,627.53		1,777,406.45	12,088,777.07	100.00	1,779,678.12

6

			(%)
		46,608.48	0.04

7**8**

(

()

1

	508,163,627.24	575,716,616.52
	495,939,122.88	550,804,478.59
	12,224,504.36	24,912,137.93
	467,564,482.94	513,550,883.21

1

	92,061,677.18	66,558,970.46
	1,712,897.44	-1,113,361.71
	1,254,126.21	15,668,379.08
	95,028,700.83	81,113,987.83

2

	53,873,016.01	7,478,850.00	
	27,746,958.94	33,874,600.00	
	882,873.82	19,013,000.00	
	9,558,828.41	6,192,520.46	55%
	92,061,677.18	66,558,970.46	

3

	1,001,879.99	527,742.85
		-1,641,104.56
	746,538.45	
	-35,521.00	
	1,712,897.44	-1,113,361.71

()

1	86,127,916.24	82,540,064.48
	5,031,687.37	2,990,772.09
	9,393,166.94	9,080,564.95

	275,944.52	271,773.24
	122,038.80	137,849.64

	50,551,164.44	35,499,984.27	42.40
	68,513,013.32	140,890,417.22	-51.37
	948,671.48	2,276,461.50	-58.33
	102,584,326.14	72,620,903.68	41.26
	672,742.21	1,202,256.96	-44.04
		381,016.36	-100.00
	8,375,929.08	202,290,908.00	-95.86

			(%)
	35,827,635.61	61,183,076.17	-41.44
	36,136,870.69	21,659,730.87	66.84
	29,082,329.95	58,953,353.88	-50.67
	-3,773,448.17	3,864,404.13	-197.65

			(%)
	22,751,061.34	6,416,411.96	254.58
	122,392,343.28	36,219,854.91	237.92
		51,599,440.00	-100.00

	53,877,304.49		100	
	12,822,136.15	1,584,528.29	709.21	
	86,479,539.20	191,091,274.02	-54.74	
		8,876,660.00	-100.00	
		339,525,017.93	-100.00	
	842,017,934.02	1,702,676,951.11	-50.55	
	13,126,646.00		100.00	
	932,432,628.87	1,989,067,193.00	-53.12	
	42,897,356.61	101,205,545.74	-57.61	
		13,126,646.00	-100.00	

1

2

3

2011 3 8

2010 12 31

1

1

2009

APPS P? D

,¥_î

1

APPS P? D

4

5

2

ISO

3

“

”

“

”

“

”

191

523

4

50

4

112

1100

1000

5

3

6

“

”

50%

1

2

3

4

5

500

35%

30%

2

3

4

6

6

7

8

9

10

11

12

—

"

"

13

14

0.5% ()

0.5%

0.5%()~5%

5%

PS ERP SD FICO PP / MM SAP

3

30

31

2010 12

2010 12 31

2011 3 8

2010

2010

2010

1

1999

2003

“ ”

1

64

50

2010

53.1

2.23

0.58

“

”

3

“

”

6

2

4

2

1

9

3

2010

2

2010

3

2004

10	0.5	2005		10	5	1	2007
	10	2	3	0.3	2008		10
0.7	2009		10	0.3			

,

1

2010 12% 112
1100 523 4
50

2010 23

2010

2

2010 1000

2010

3

191

2010

2010

1

2008 8

A

529 65

A 2.8

2010 2 8

—

“ ”

2

2010

H

25

18

2

2010

2010

2010

14.3

2010

7

2010

B

4

4

2010
23

2010

107,647.2

2010

1.38

3

11

2011

2011

1 2011

2

1

2

3

1

2

1

2